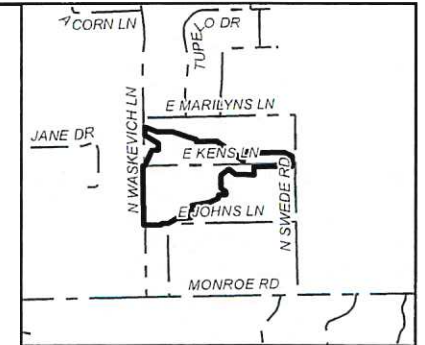
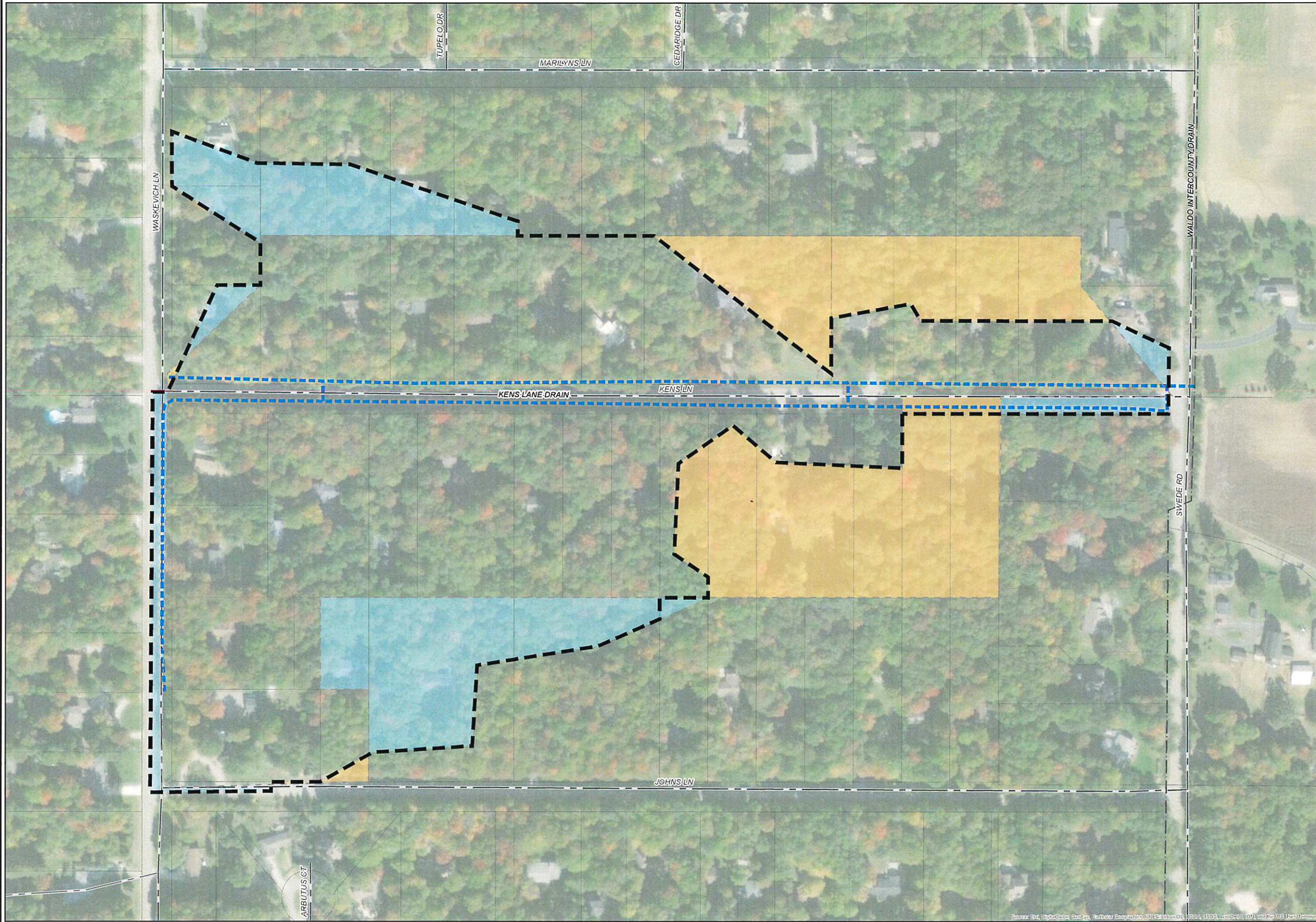




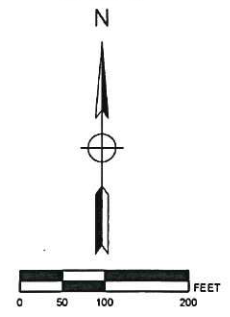
KENS LANE DRAIN

MIDLAND COUNTY, MICHIGAN

MIDLAND COUNTY DRAIN COMMISSIONER - DOUGLAS D. ENOS



AREA MAP
NOT TO SCALE



LEGEND

- DRAINAGE DISTRICT BOUNDARY
- HISTORIC DRAINAGE DISTRICT BOUNDARY
- APPROXIMATE DRAIN LOCATION
- APPROXIMATE LOCATION OF OUTLET DRAIN
- PARCELS
- STATE ROADS
- COUNTY ROADS
- LOCAL ROADS
- LANDS ADDED
- LANDS REMOVED

DRAINAGE DISTRICT BREAKDOWN

MIDLAND COUNTY		
LARKIN TOWNSHIP		36.37 AC.
TOTAL ACREAGE IN DISTRICT		36.37 AC.
LENGTH OF DRAIN		
KENS LANE DRAIN		2285.07 FT.

LDO	DAY OF REVIEW OF APPORTIONMENTS	12/11/2019
BY MARK	REVISIONS	DATE

THE WORK REPRESENTED BY THIS DRAWING WAS DESIGNED BY THE ENGINEER FOR THIS SPECIFIC APPLICATION AND SPECIFIC LOCATION DESCRIBED HEREIN IN ACCORDANCE WITH THE CONDITIONS PREVALENT AT THE TIME THE DESIGN WAS DONE. THE ENGINEER DOES NOT GUARANTEE AND WILL NOT BE LIABLE FOR ANY OTHER LOCATION, CONDITION, OR SUCH OR PURPOSE.

KENS LANE DRAIN
MIDLAND COUNTY, MICHIGAN

DRAINAGE DISTRICT MAP

SAGINAW OFFICE
230 S. Washington Ave
Saginaw, MI 48607
Tel: 989-754-4717
www.SpicerGroup.com

DE BY: LDO	CH BY: LDO	PROJECT NO.
DR BY: DMS	APP BY: RBH	126006SG2018

STDS.	SHEET 1 OF 1	DR
DATE: DECEMBER 2019	FILE NO.	1
SCALE: 1" = 100'		

FILE: G:\PROJECTS\126006SG2018 - WALDO INTERCOUNTY DRAINAGE\DRAWINGS\KENS_LANE_DRAIN_MAP.DWG, PRINTED ON: 12/08/2019, BY: CHRISTIAN HALELAND