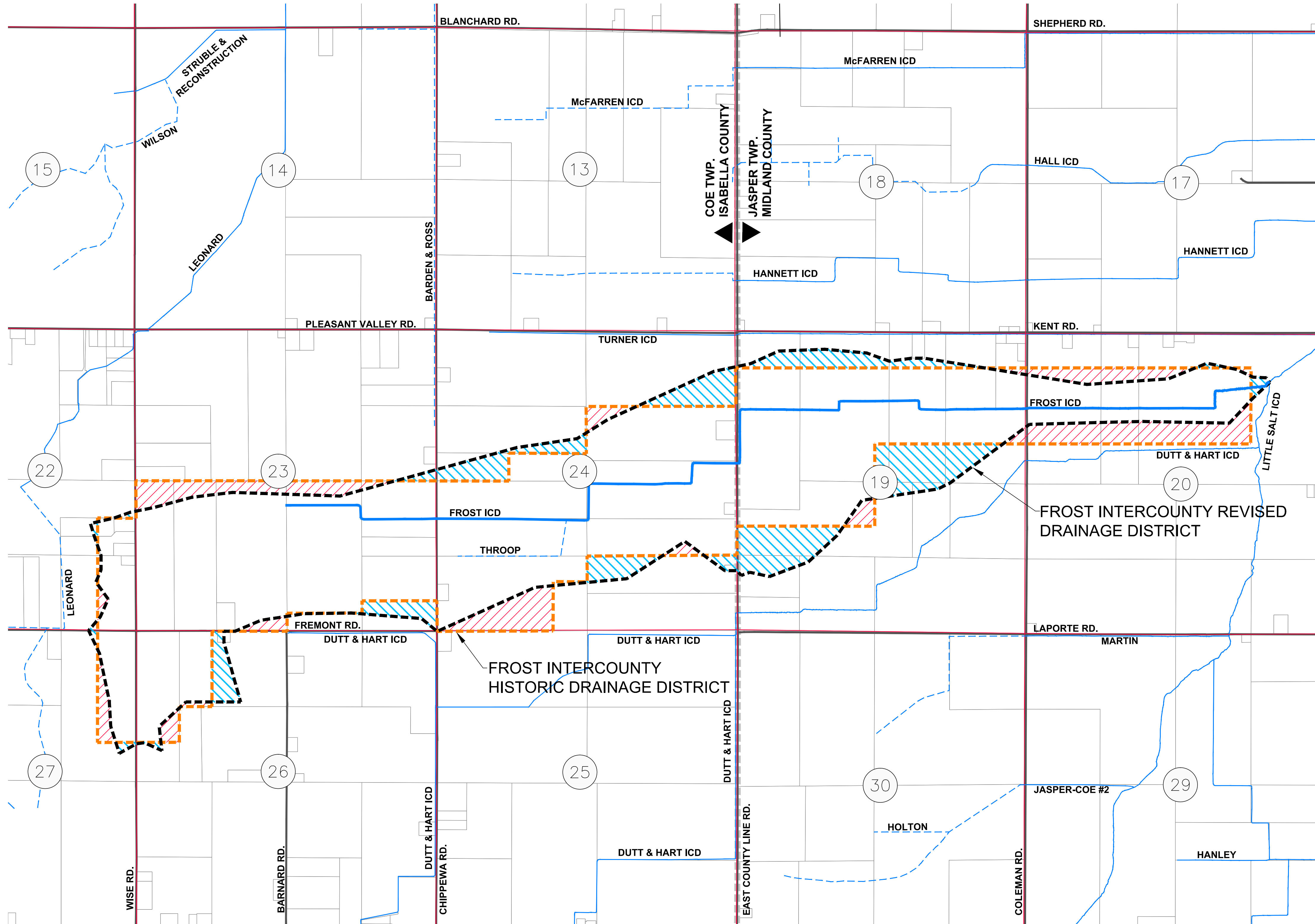




Frost Intercounty Drain

Sections 22 - 24 & 26 - 27
T13N, R3W, Coe Township
Isabella County, Michigan

Sections 19 - 20
T13N, R2W, Jasper Township
Midland County, Michigan

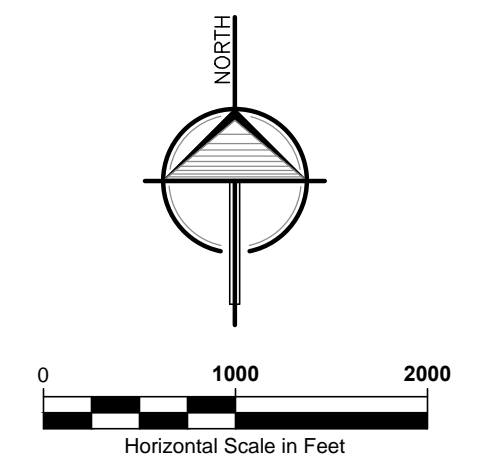


DRAINAGE DISTRICT INFORMATION:

HISTORIC DISTRICT:	1,085.57 ACRES
REVISED DISTRICT:	1,110.32 ACRES
LANDS ADDED:	151.47 ACRES
LANDS REMOVED:	126.72 ACRES
DRAIN LENGTH	
FROST INTERCOUNTY DRAIN	3.78 MILES

LEGEND

- LANDS REMOVED
- LANDS ADDED
- ENCLOSED DRAIN
- OPEN CHANNEL DRAIN
- HISTORIC DRAINAGE DISTRICT BOUNDARY
- REVISED DRAINAGE DISTRICT BOUNDARY
- PARCEL LINES
- ROADS
- SECTION LINES
- CITY / VILLAGE LIMITS
- TOWNSHIP LINE
- COUNTY LINE
- SECTION NUMBERS



LANDS ADDED/REMOVED MAP EXHIBIT B-1

	2121 3 Mile Rd. NW Walker, MI 49544 Ph: 616-301-7888 www.LREMI.com	PROJECT#: 19-168 DRAWN BY: KJB DATE: 06/24/2020 QA/QC: MPB
--	---	---