

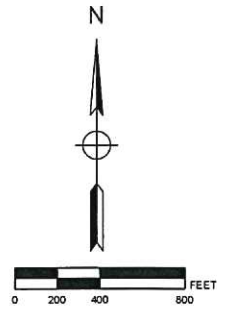
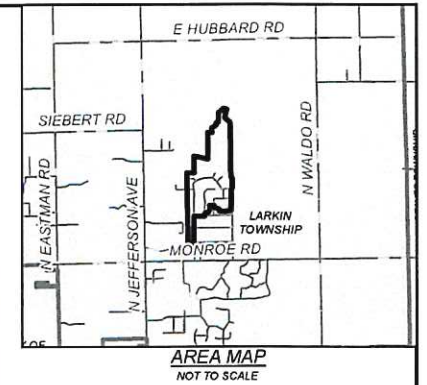
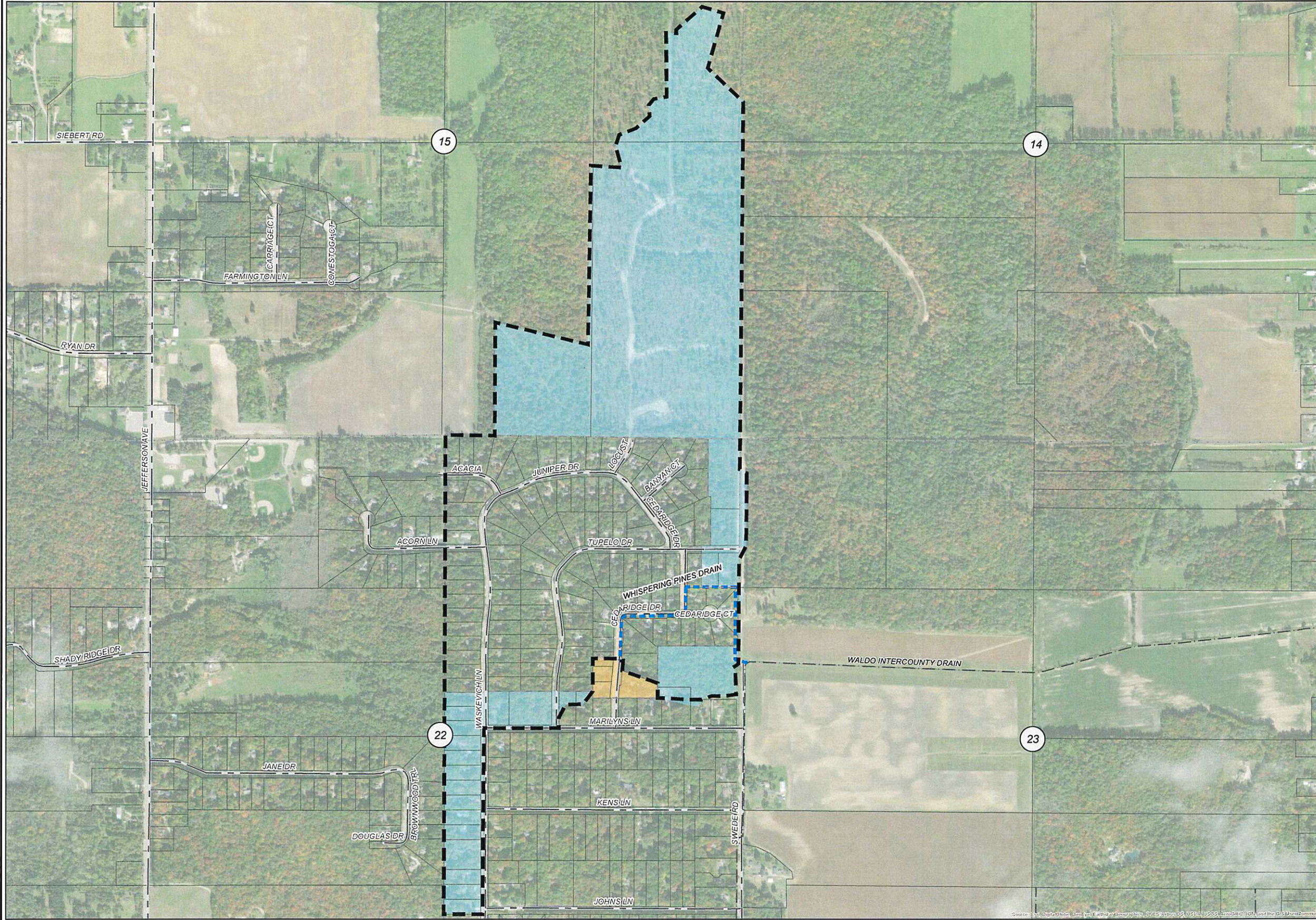


WHISPERING PINES DRAIN

MIDLAND COUNTY, MICHIGAN

MIDLAND COUNTY DRAIN COMMISSIONER - DOUGLAS D. ENOS

Cedaridge



LEGEND

- DRAINAGE DISTRICT BOUNDARY
- HISTORIC DRAINAGE DISTRICT BOUNDARY
- APPROXIMATE DRAIN LOCATION
- APPROXIMATE LOCATION OF OUTLET DRAIN
- PARCELS
- STATE ROADS
- COUNTRY ROADS
- LOCAL ROADS
- LANDS ADDED
- LANDS REMOVED

DRAINAGE DISTRICT BREAKDOWN

MIDLAND COUNTY		
LARKIN TOWNSHIP		312.59 AC.
TOTAL ACREAGE IN DISTRICT		312.59 AC.
LENGTH OF DRAIN		
WHISPERING PINES DRAIN		1198.83 FT.

LDO	DAY OF REVIEW OF APPORTIONMENTS	12/15/2019
BY	MARK	REVISIONS
DATE		

THE WORK REPRESENTED BY THIS DRAWING WAS DESIGNED BY THE ENGINEER FOR THIS SPECIFIC APPLICATION AND SPECIFIC LOCATION DESCRIBED HEREON IN ACCORDANCE WITH THE CONDITIONS PREVALENT AT THE TIME THE DESIGN WAS DONE. THE ENGINEER DOES NOT GUARANTEE AND WILL NOT BE LIABLE FOR ANY OTHER LOCATION, CONDITION, DESIGN OR PURPOSE.

WHISPERING PINES DRAIN
MIDLAND COUNTY, MICHIGAN

DRAINAGE DISTRICT MAP

SAGINAW OFFICE
230 S. Washington Ave
Saginaw, MI 48607
Tel: 989-754-4117
www.SpicerGroup.com

DE. BY: LDO	CH. BY: LDO	PROJECT NO.
DR. BY: DMS	APP. BY: RBH	126006SG2018
STDs.	SHEET 1 OF 1	DR
DATE: DECEMBER 2019	FILE NO.	1
SCALE: 1" = 400'		