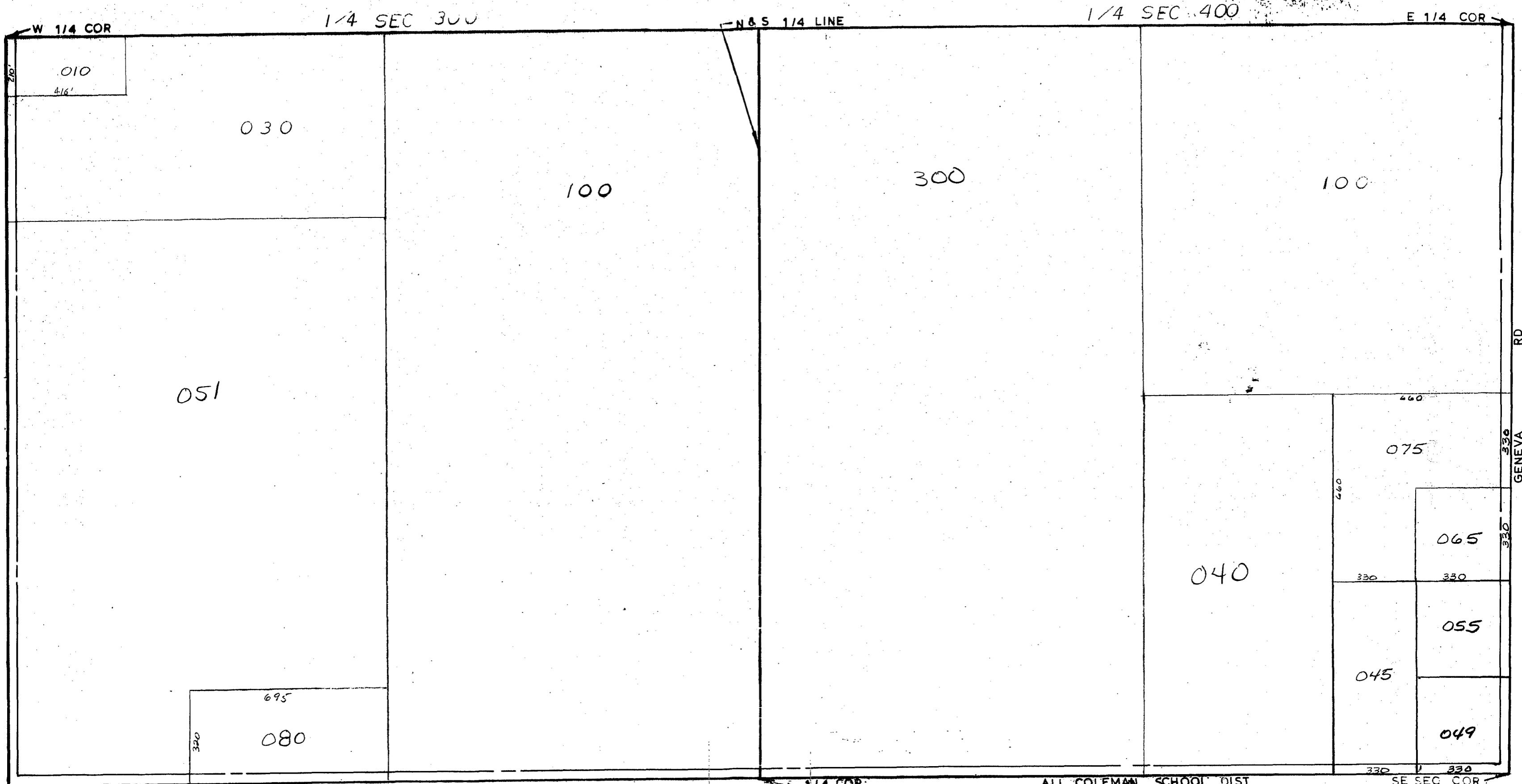


MIDLAND COUNTY  
Equalization Department  
12121 Laurel Springs Road  
Midland, MO 64640



W 1/4 COR

1/4 SEC 300

N & S 1/4 LINE

1/4 SEC 400

E 1/4 COR

010

416'

030

100

300

100

051

460

075

065

040

055

695

080

045

049

SW SEC COR

BURNS RD

SCALE  
DRAWN

S 1/4 COR:  
1" = 300'  
BY K. K. Y.

ALL COLEMAN SCHOOL DIST

SE SEC COR

T 16N R2W

WARREN TOWNSHIP

REV. 12-8-00  
S1/2SEC33