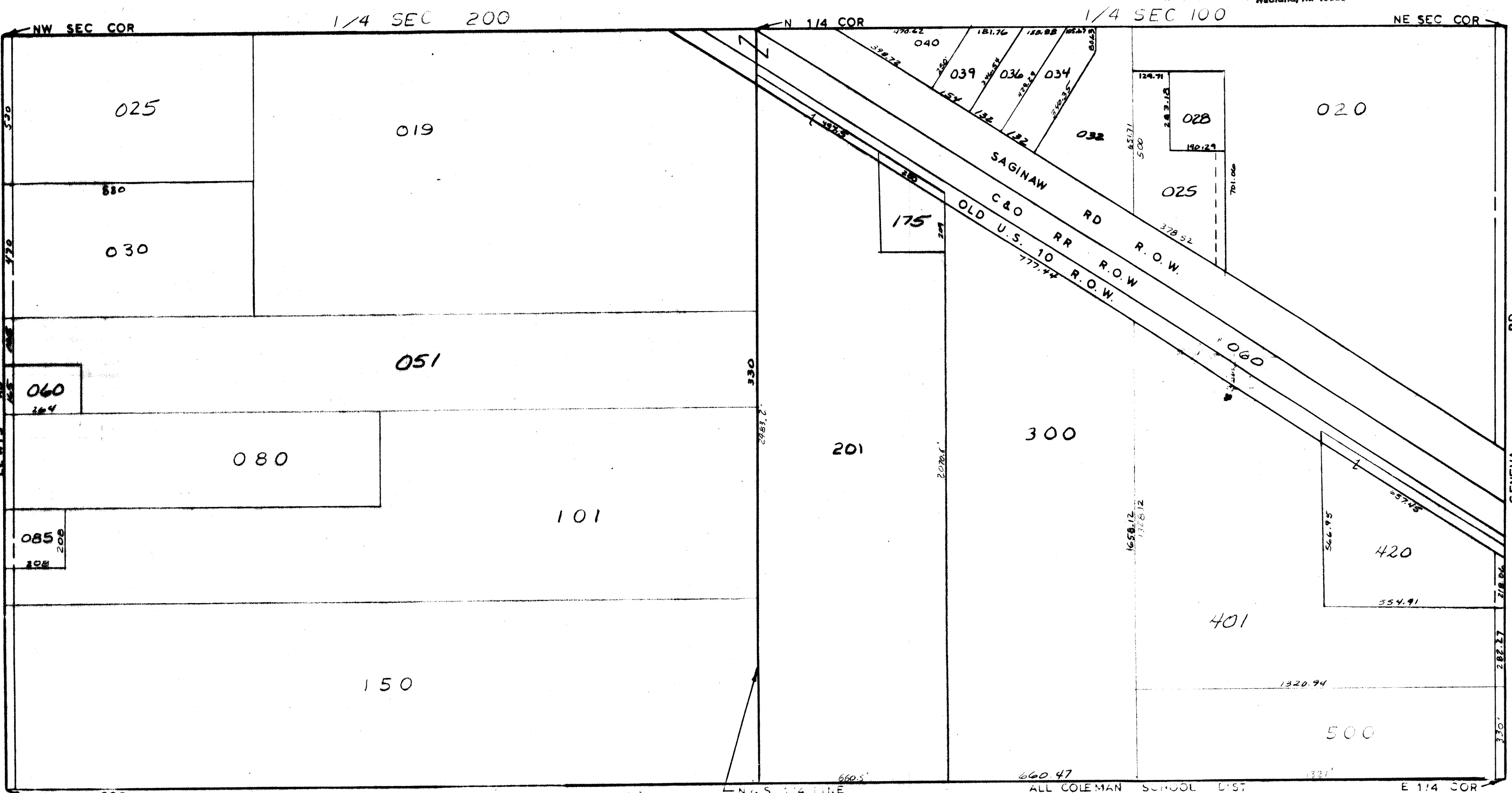


MIDLAND COUNTY
Equalization Department
1212 James Savage Road
Midland, Mt 48640



ENCL. S. 1/4 LINE
SCALE 1" = 300'
DRAWN BY R.R.Y.

ALL COLEMAN SCHOOL DIST

T 16N R 2W

WARREN TOWNSHIP

REV 12-21-06
N 1/2 SEC 33