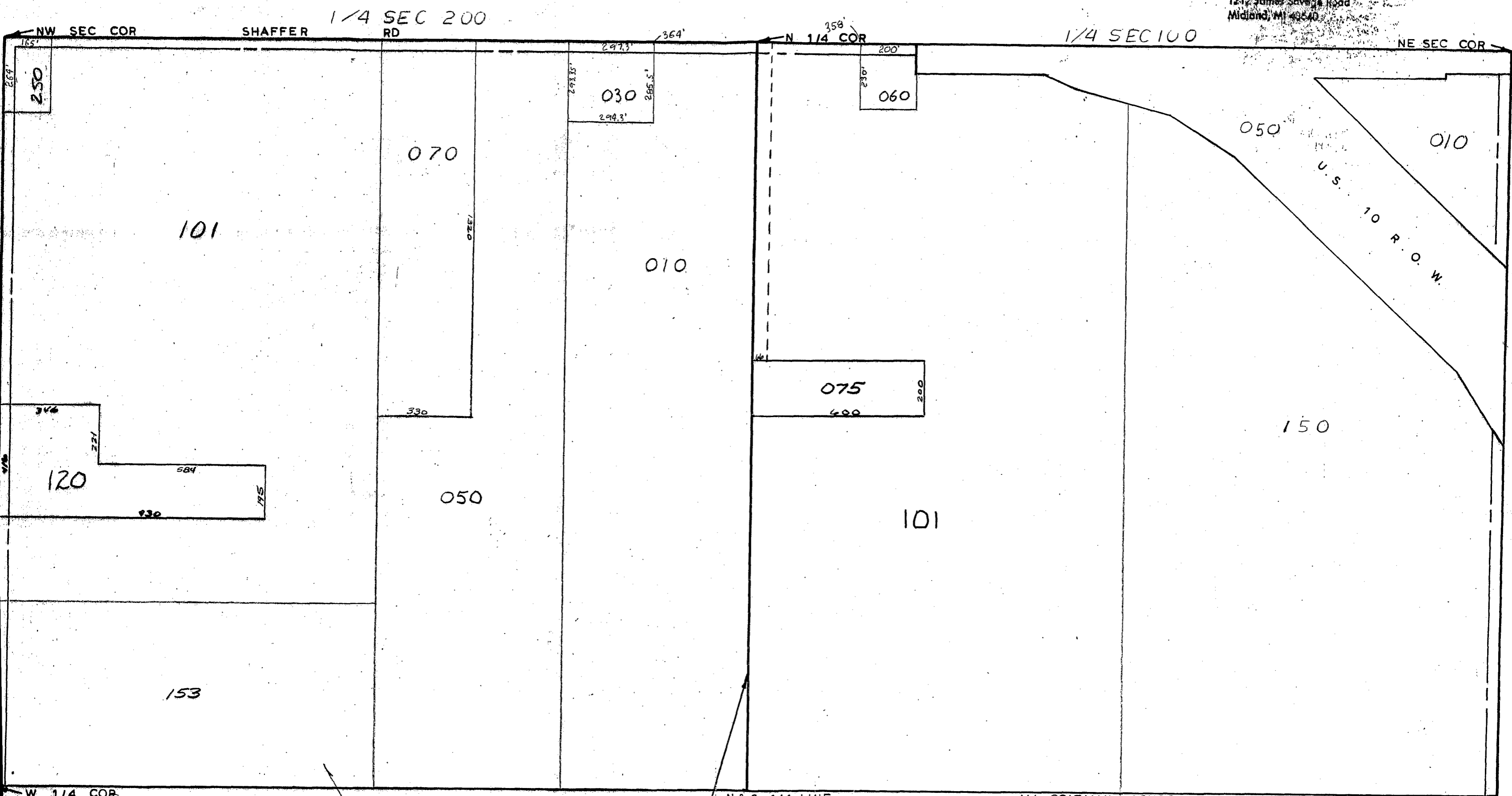


MIDLAND COUNTY  
Equalization Department  
1212 James Savage Road  
Midland, MI 49640



N & S 1/4 LINE  
SCALE 1" = 300'  
DRAWN BY R.R.Y.

ALL COLEMAN SCHOOL DIST

T 16N R 2W

WARREN TOWNSHIP

REV. 12-17-04  
N 1/2 SEC 28