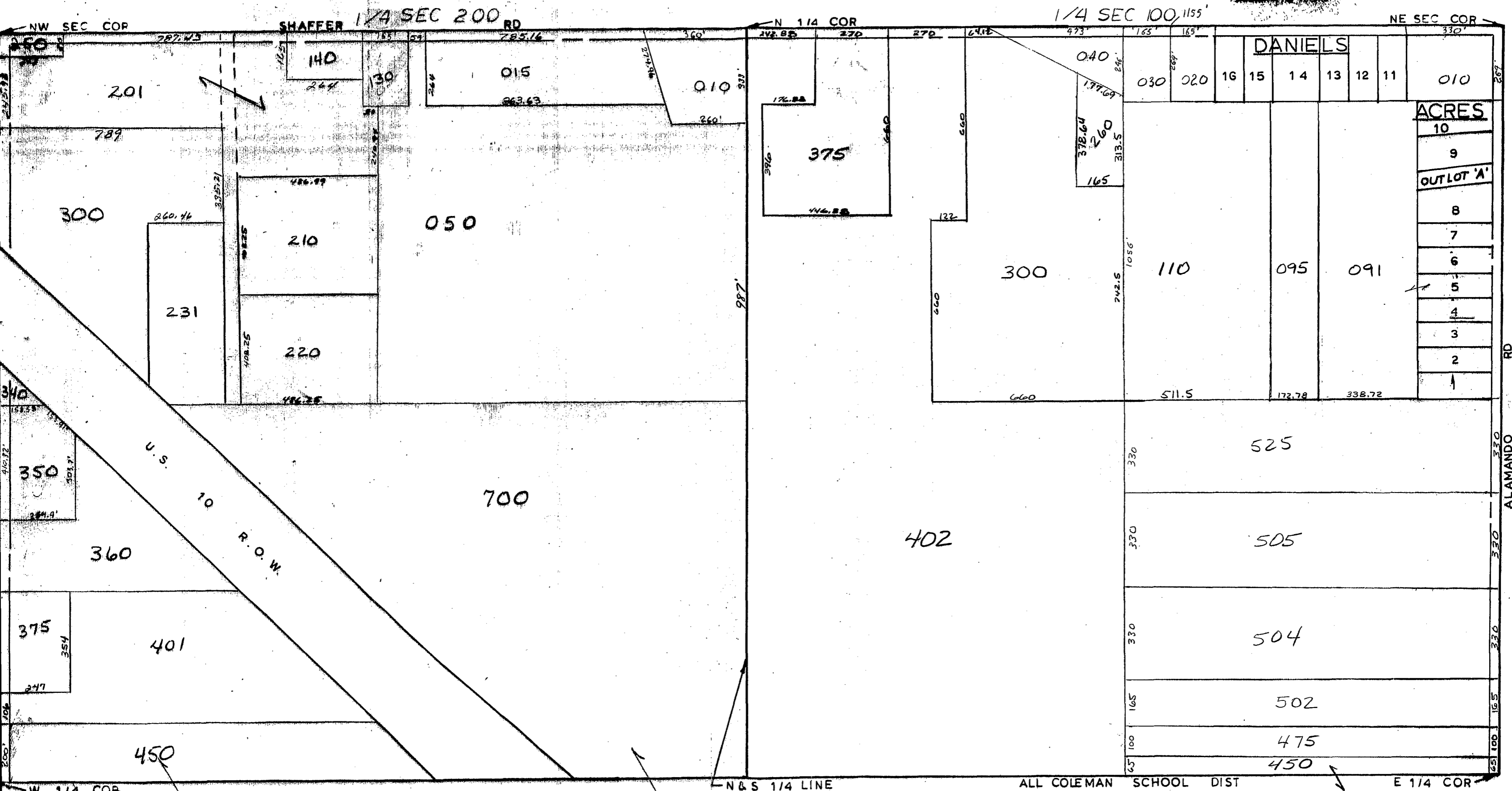


MIDLAND COUNTY
EVALUATION DEPARTMENT
1211 Jamel Street, Room 111
Midland, TX 79701



N & S 1/4 LINE
SCALE 1" = 300'
DRAWN BY R.R.Y.

ALL COLEMAN SCHOOL DIST

T16N R2W

WARREN TOWNSHIP

REV 12-22-03
N1/2SEC27