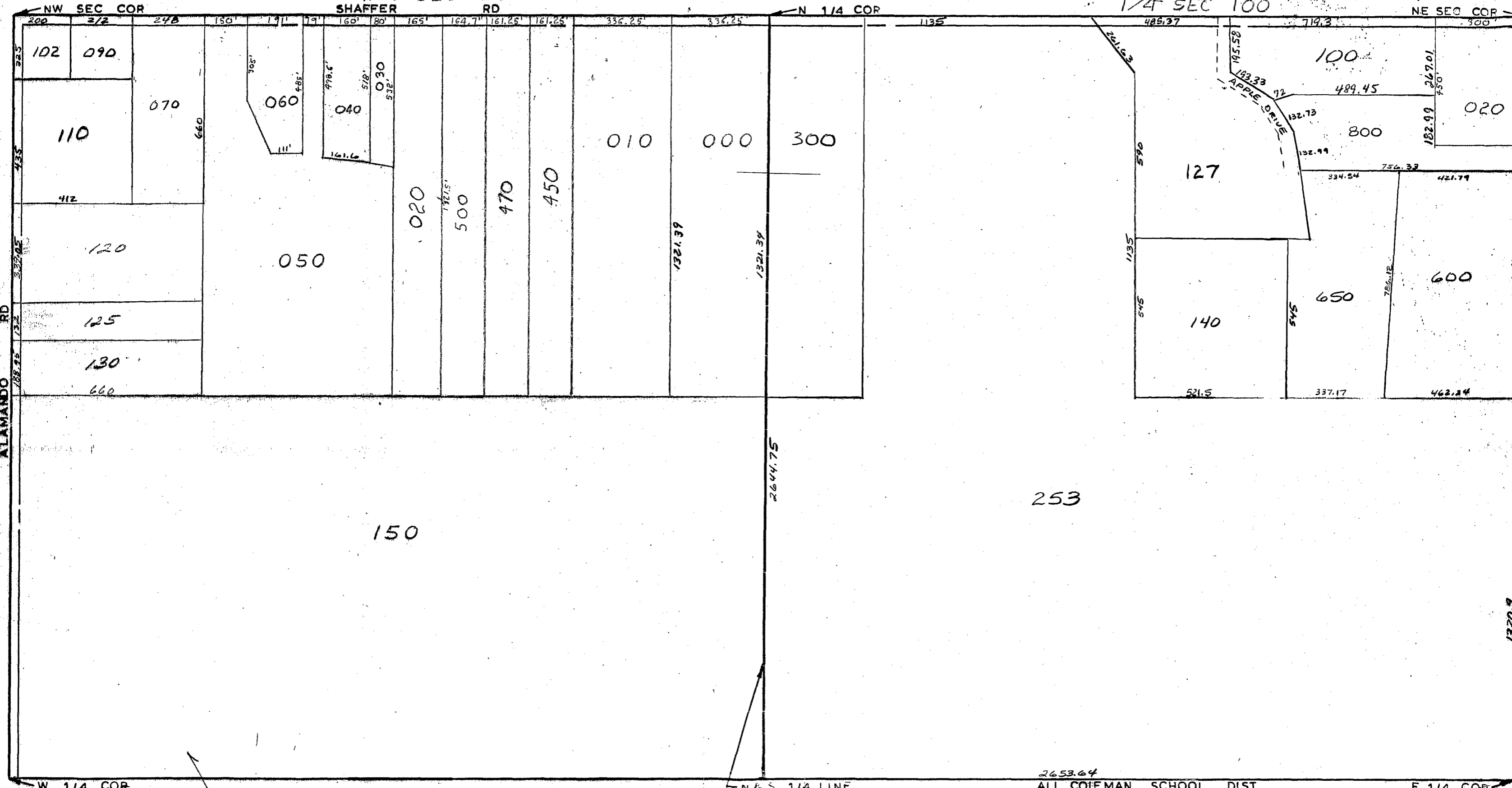


MIDLAND COUNTY
Equalization Department
1212 Jones Avenue Road
Midland, MI 48640

1/4 SEC 200
SHAFER RD

1/4 SEC 100



N & S 1/4 LINE
SCALE 1" = 300'
DRAWN BY R.R.Y.

2653.64
ALL COLEMAN SCHOOL DIST

T 16N R 2W

WARREN TOWNSHIP

REV 12-17-04
N 1/2 SEC 26