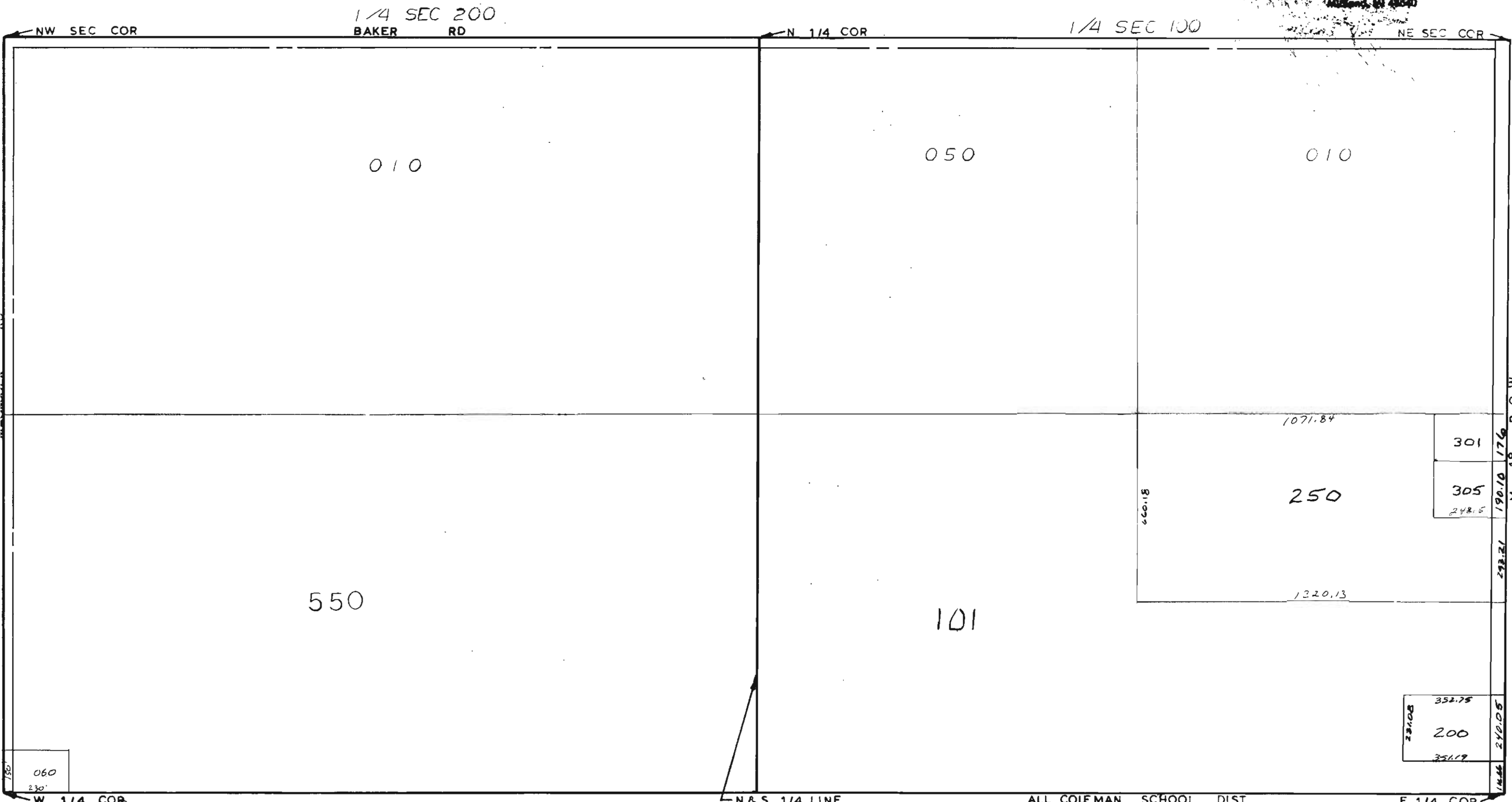


MIDLAND COUNTY  
Engineering Department  
1217 James Savage Road  
Midland, MI 48640



1/4 SEC 200  
BAKER RD

1/4 SEC 100

NW SEC COR

N 1/4 COR

NE SEC COR

010

050

010

550

101

250

301

305

248.5

352.75  
200  
351.9

060

W 1/4 COR

N & S 1/4 LINE  
SCALE 1" = 300'  
DRAWN BY R.R.Y.

ALL COLEMAN SCHOOL DIST

E 1/4 COR

M - 18 R.O.W.

T 16N R 2W

WARREN TOWNSHIP

REV 12-14-10  
N 1/2 SEC 24