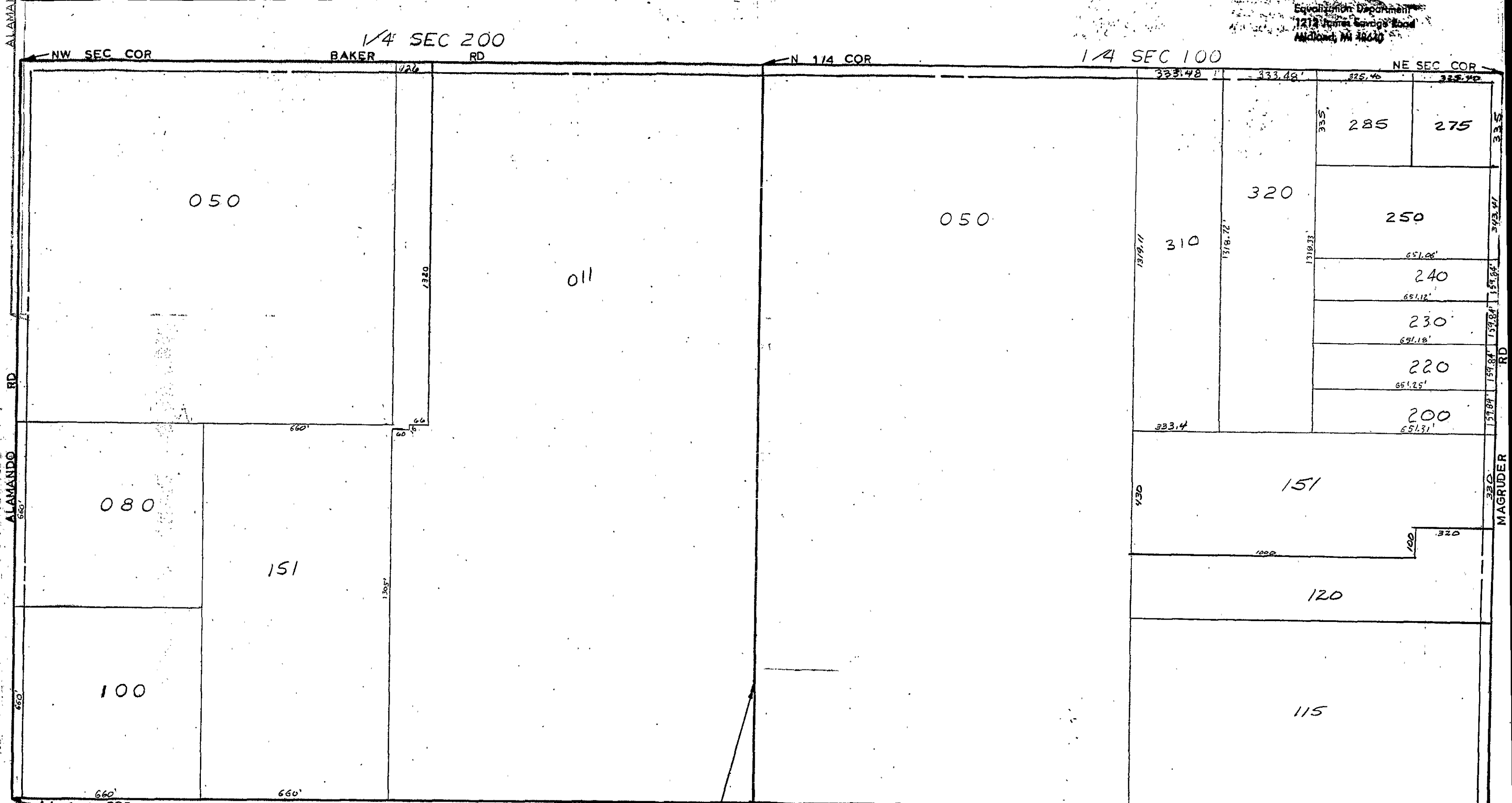


Equation Department
1212 James Savage Road
Midland, MI 48640



1/4 SEC 200

1/4 SEC 100

NW SEC COR

N 1/4 COR

NE SEC COR

BAKER RD

RD

ALAMANDO RD

RD

MAGRUDER RD

W 1/4 COR

N & S 1/4 LINE
SCALE 1" = 300'
DRAWN BY R.R.Y.

ALL COLEMAN SCHOOL DIST

E 1/4 COR

T 16N R 2W

WARREN TOWNSHIP

REV. 12-16-05
N1/2SEC23