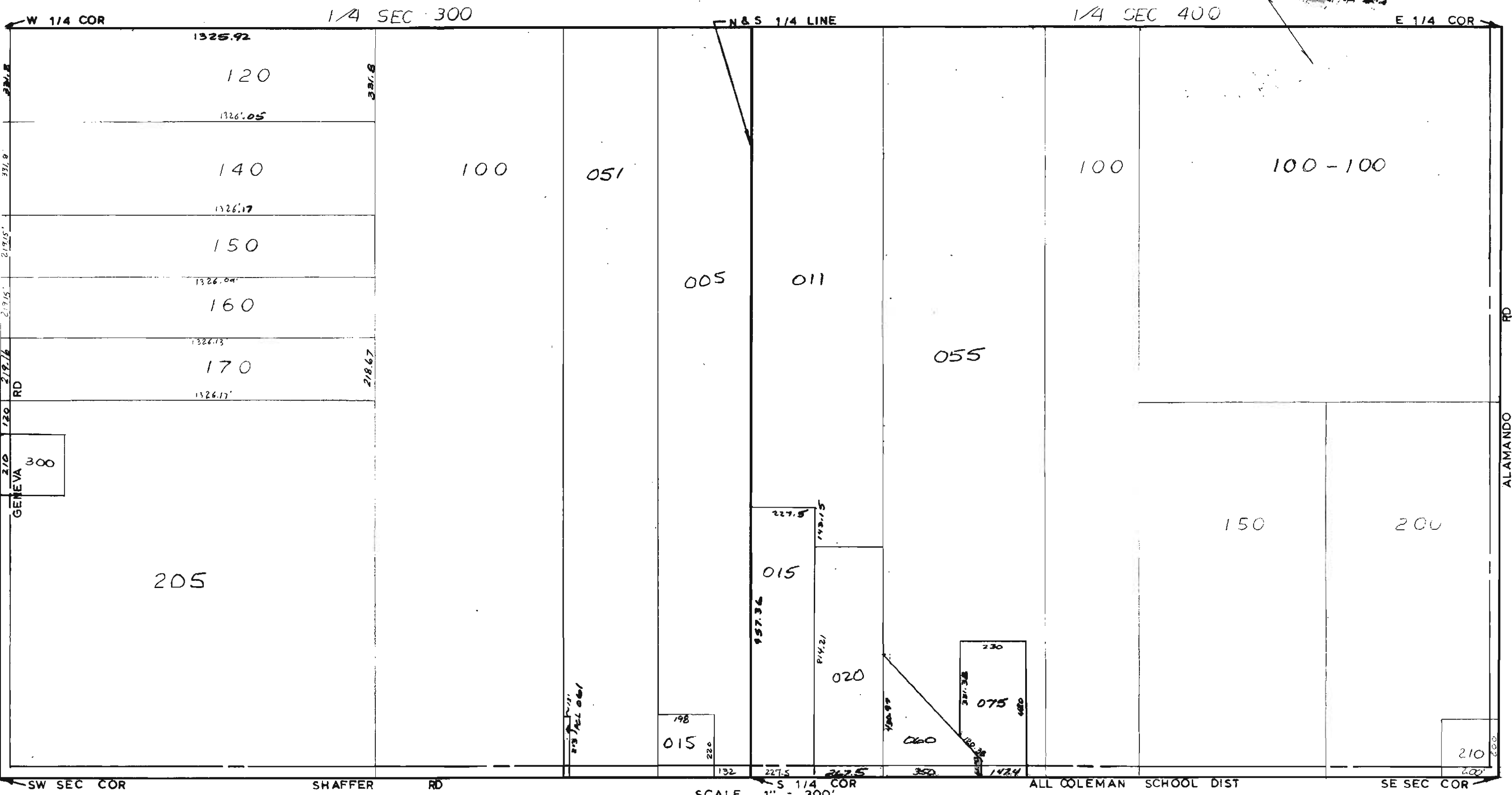


MIDLAND COUNTY
 Equalization Department
 1217 Jones Garage Road
 Midland, TX 79701



SCALE
 DRAWN 1" = 300'
 BY R. R. Y.

ALL COLEMAN SCHOOL DIST

T 16NR2W

WARREN TOWNSHIP

REV. 12-14-10
 S1/2SEC22