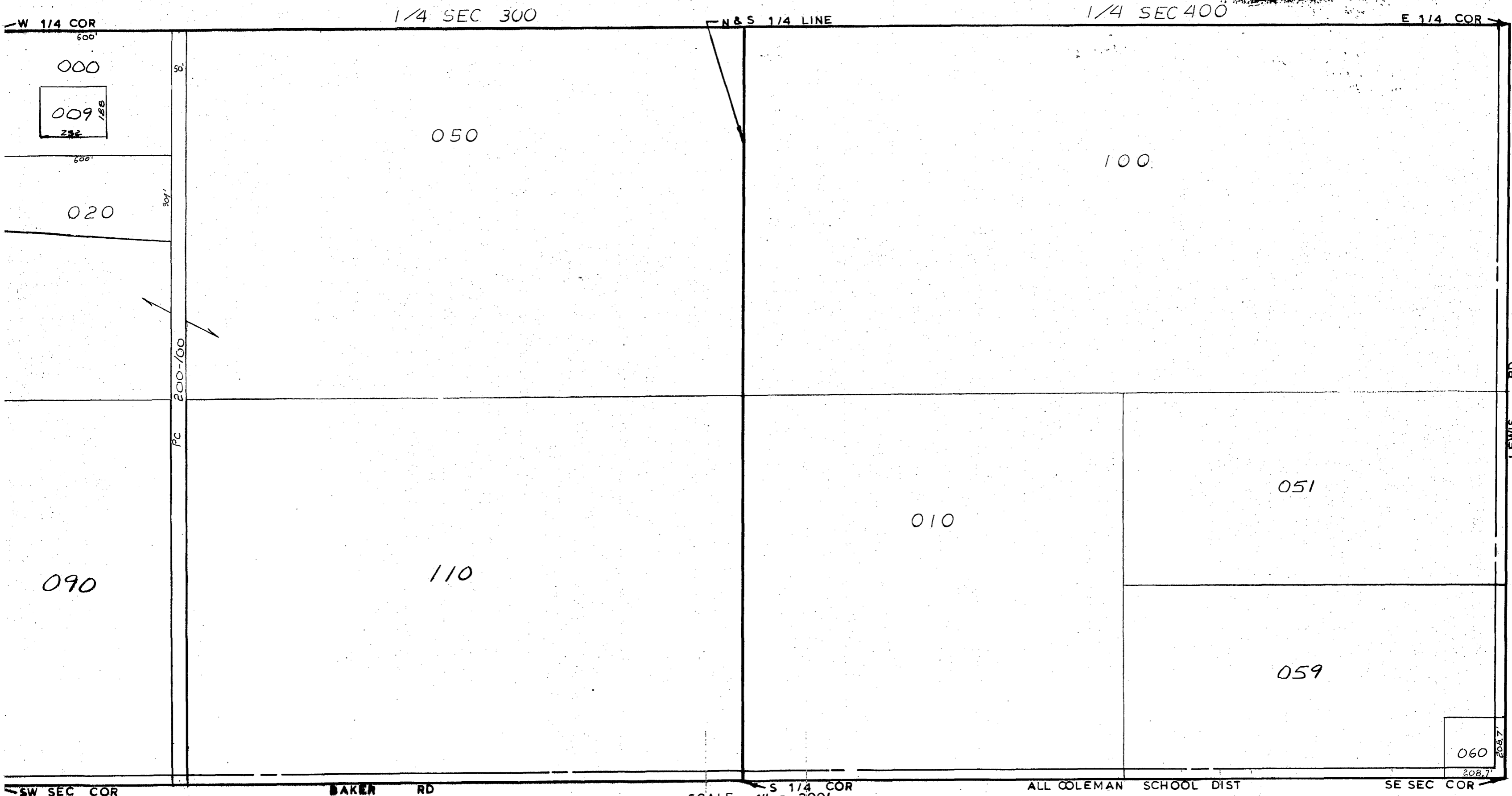


MIDLAND COUNTY
Equalization Department
1212 James Savage Road
Midland, MI 49640



1/4 SEC 300

1/4 SEC 400

N & S 1/4 LINE

W 1/4 COR

E 1/4 COR

SW SEC COR

BAKER RD

SCALE
DRAWN

S 1/4 COR
1" = 300'
BY R. R. Y.

ALL COLEMAN SCHOOL DIST

SE SEC COR

T 16N R 2W

WARREN TOWNSHIP

REV. 12-26-96
S 1/2 SEC 17