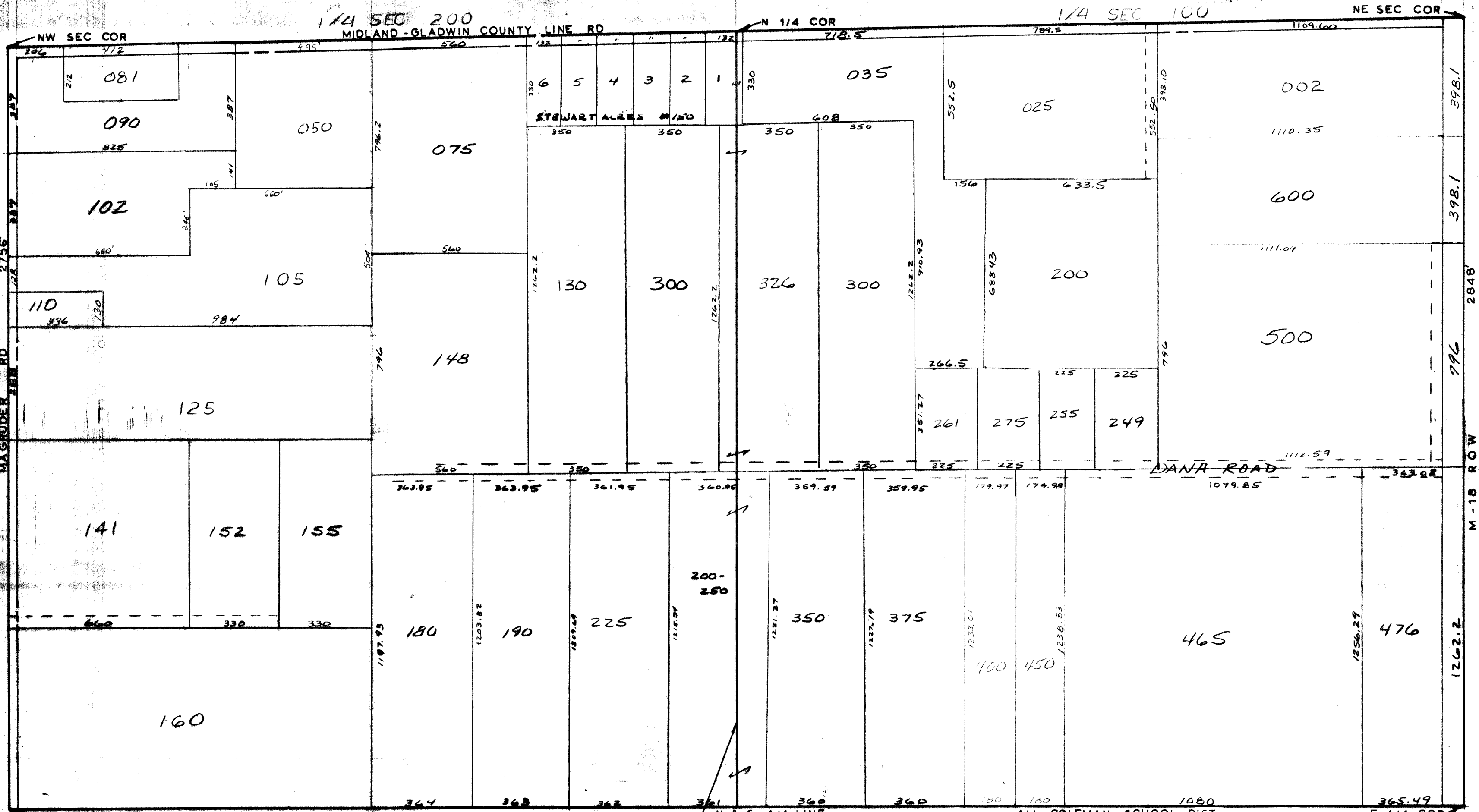


MICHIGAN COUNTY  
Equalization Department  
1212 James Savage Road  
Midland, MI 48640



N & S 1/4 LINE  
SCALE 1" = 300'  
DRAWN BY R.R.Y.

ALL COLEMAN SCHOOL DIST

T16N R2W

WARREN TOWNSHIP

REV. 12-20-06  
N1/2SEC1