

1212 James Savage Road,  
Midland, MI 48640

1/4 SEC 300  
2262.89'

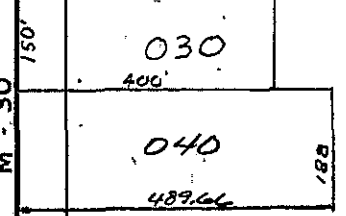
1/4 SEC 400

E 1/4 COR

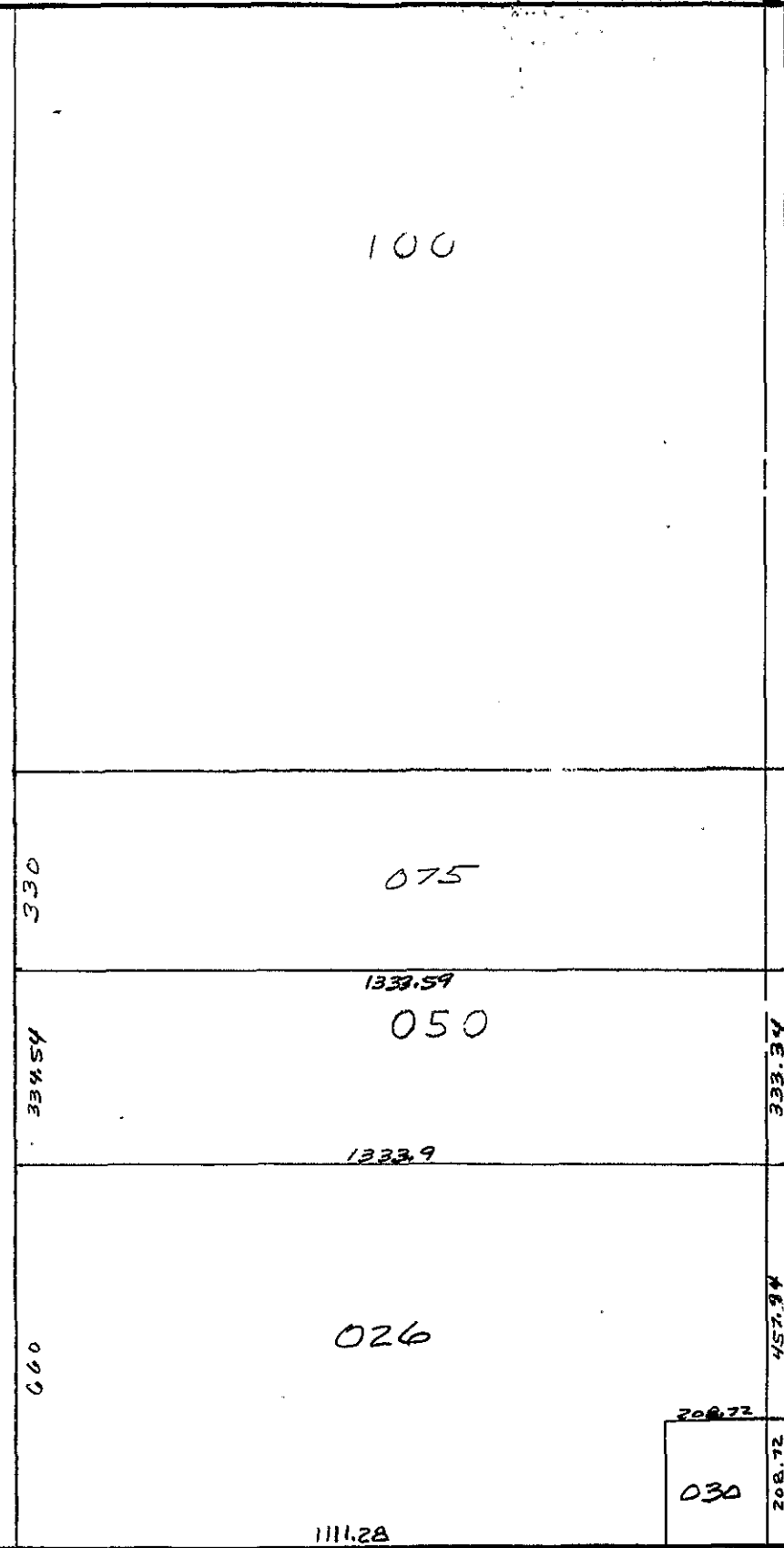
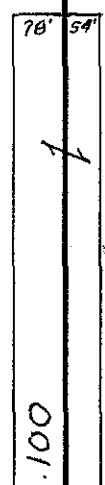
W 1/4 COR

N & S 1/4 LINE

M - 30  
R.O.W.  
426.9  
150'



001



S MILE RD

U. S. 10  
R. O. W.

SW SEC COR

2256'

S 1/4 COR

ALL MERIDIAN SCHOOL DIST

SE SEC COR

SCALE  
DRAWN BY R.R.Y.  
1" = 300'

T15NR1E

LINCOLN TOWNSHIP

REV. 12-15-05  
S1/2SEC21