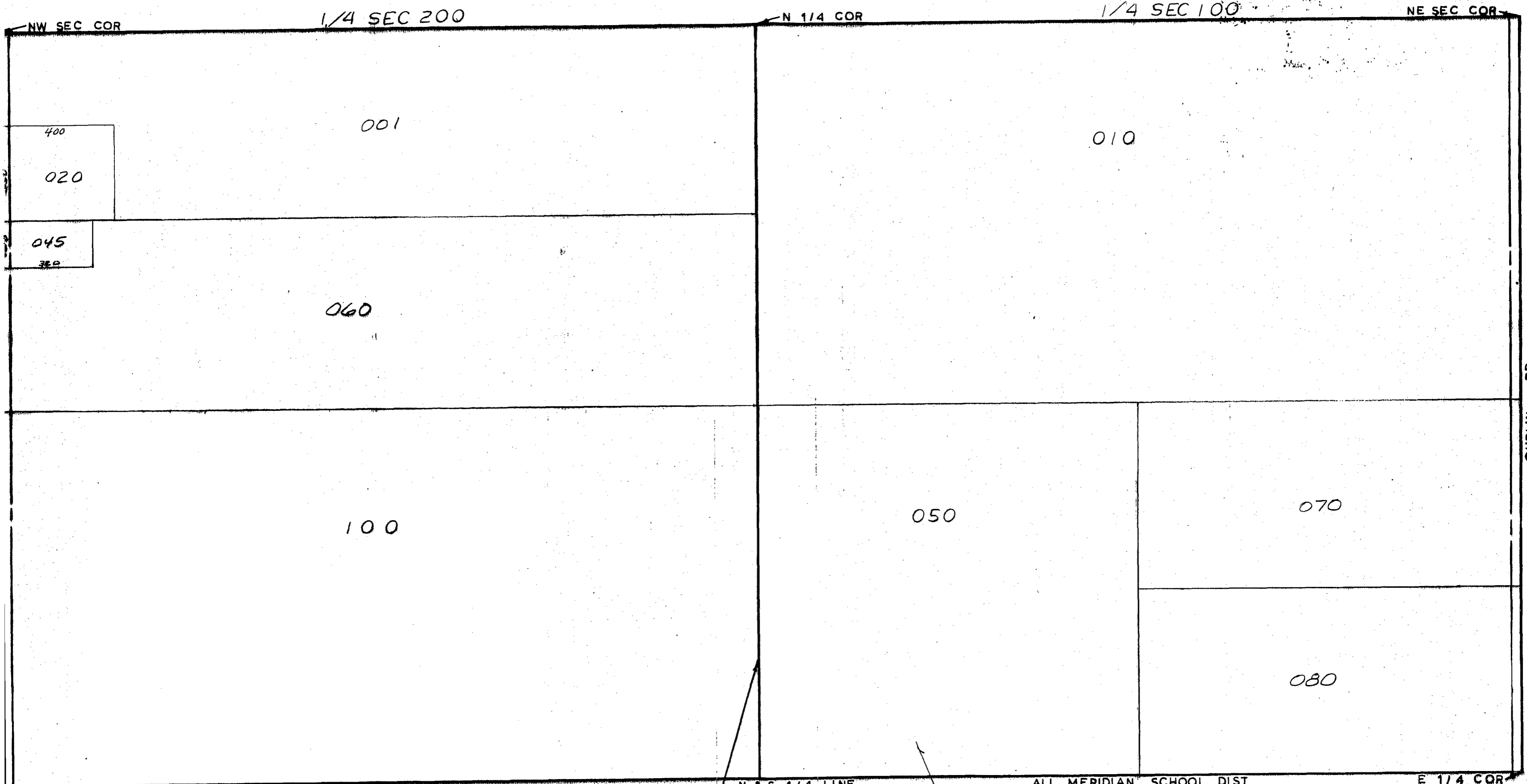


MIDLAND COUNTY
Equalization Department
1212 James Savage Road
Midland, MI 48640



N & S 1/4 LINE
SCALE 1" = 300'
DRAWN BY R.R.V.

ALL MERIDIAN SCHOOL DIST

T 15N R 1E

LINCOLN TOWNSHIP

REV. 12-7-00
N1/2SEC12