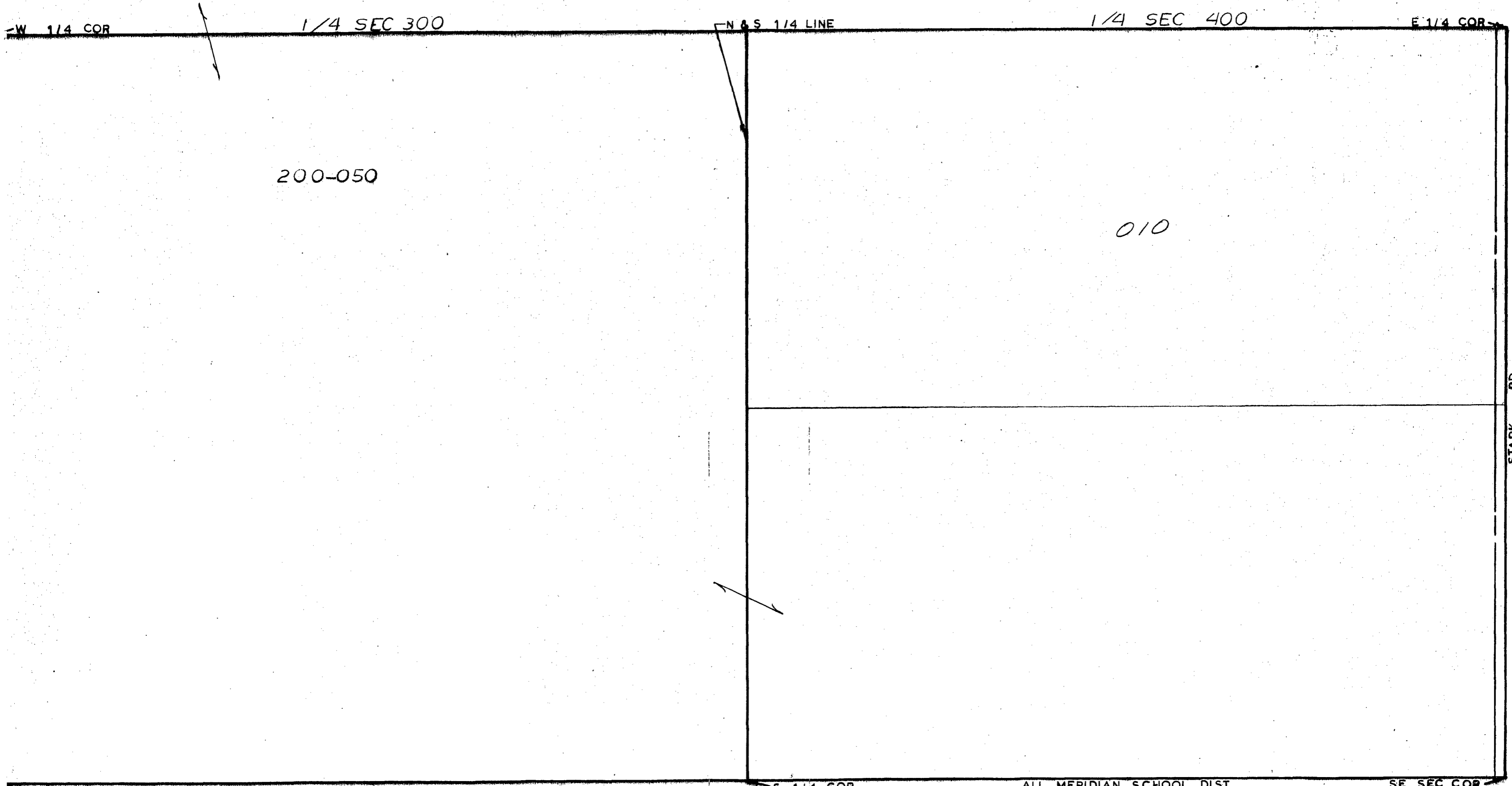


MIDLAND COUNTY  
Cadastral Department  
111 James Savage Road  
Lansing, MI 48640



W 1/4 COR

1/4 SEC 300

N & S 1/4 LINE

1/4 SEC 400

E 1/4 COR

200-050

010

SW SEC COR

S 1/4 COR

ALL MERIDIAN SCHOOL DIST

SE SEC COR

SCALE 1" = 300'  
DRAWN BY R.R.Y.

STARK RD

T 15N R1E

LINCOLN TOWNSHIP

REV. 51/2SEC11