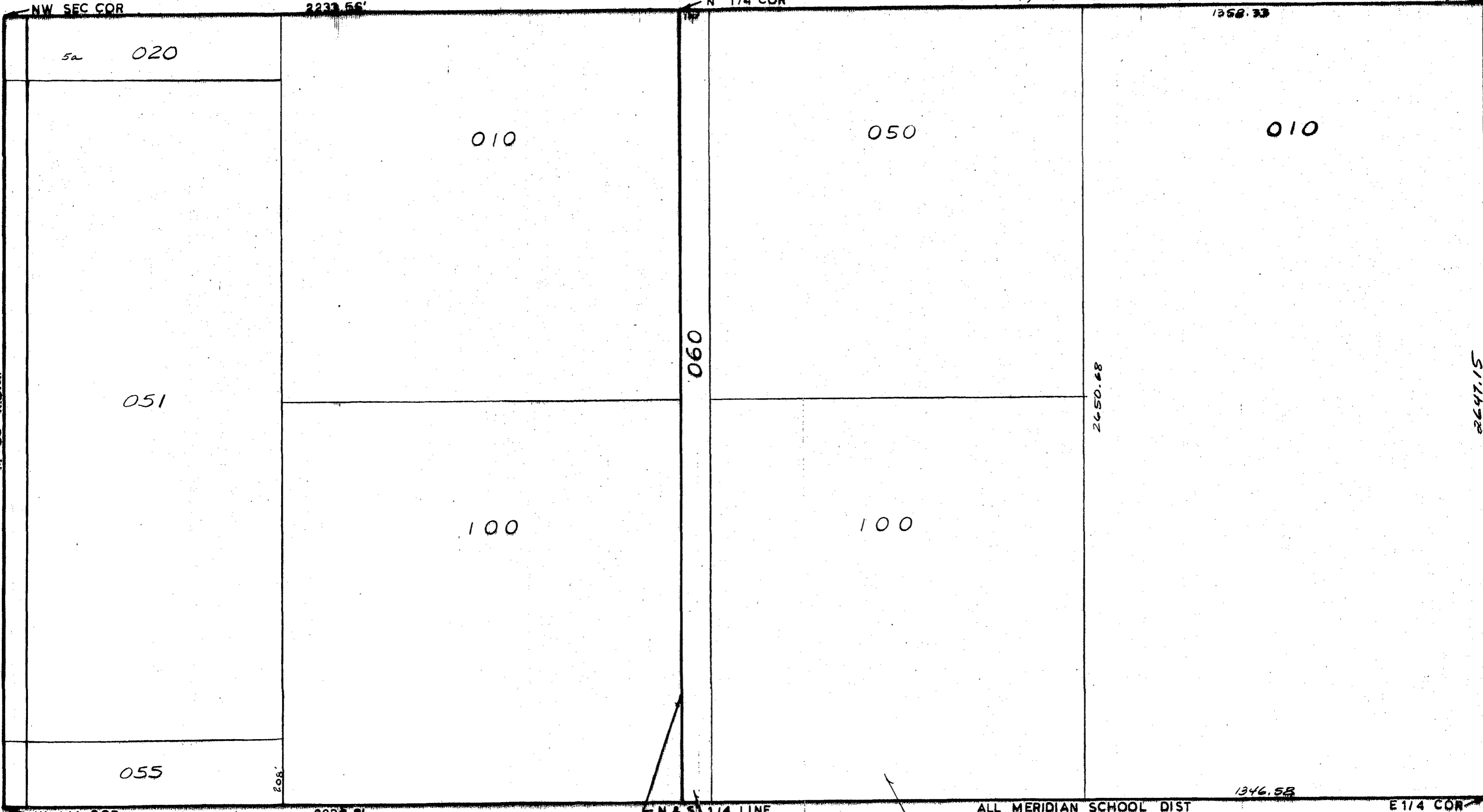


MIDLAND COUNTY  
Equalization Department  
1212 James Savage Road  
Midland, MI 48640

1/4 SEC 200  
2233.56'

1/4 SEC 100



N & S 1/4 LINE  
SCALE 1" = 300'  
DRAWN BY R.R.Y.

ALL MERIDIAN SCHOOL DIST

T 15N R 1E

LINCOLN TOWNSHIP

REV. 12-10-93  
N1/2SEC 9