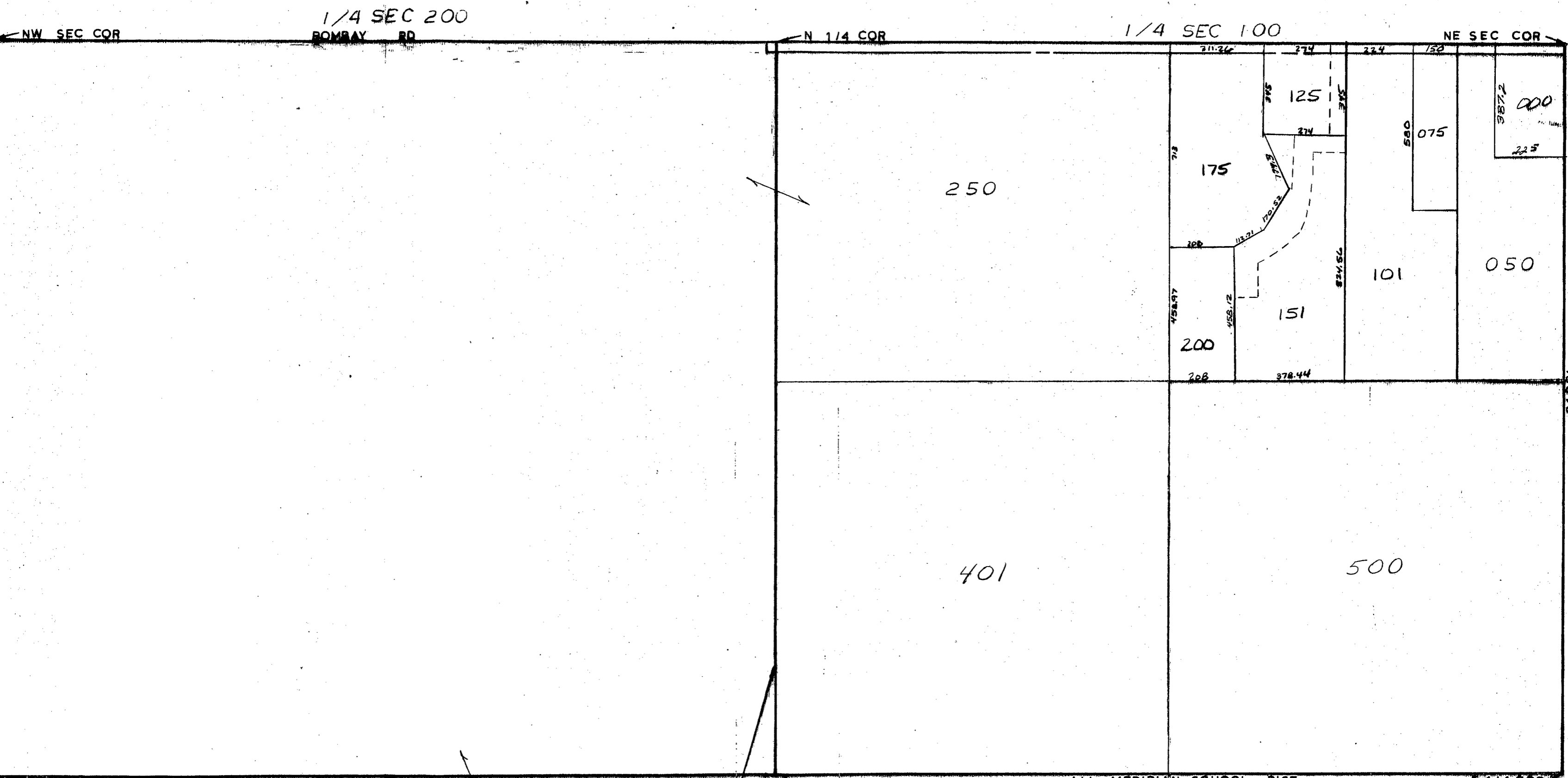


MIDLAND COUNTY  
Equalization Department  
1212 James Savage Road  
Midland, MI 48640



N & S 1/4 LINE  
SCALE 1" = 300'  
DRAWN BY R. R. Y.

ALL MERIDIAN SCHOOL DIST

T 15N R 1E

LINCOLN TOWNSHIP

REV. 12-2-99  
N1/2SEC3