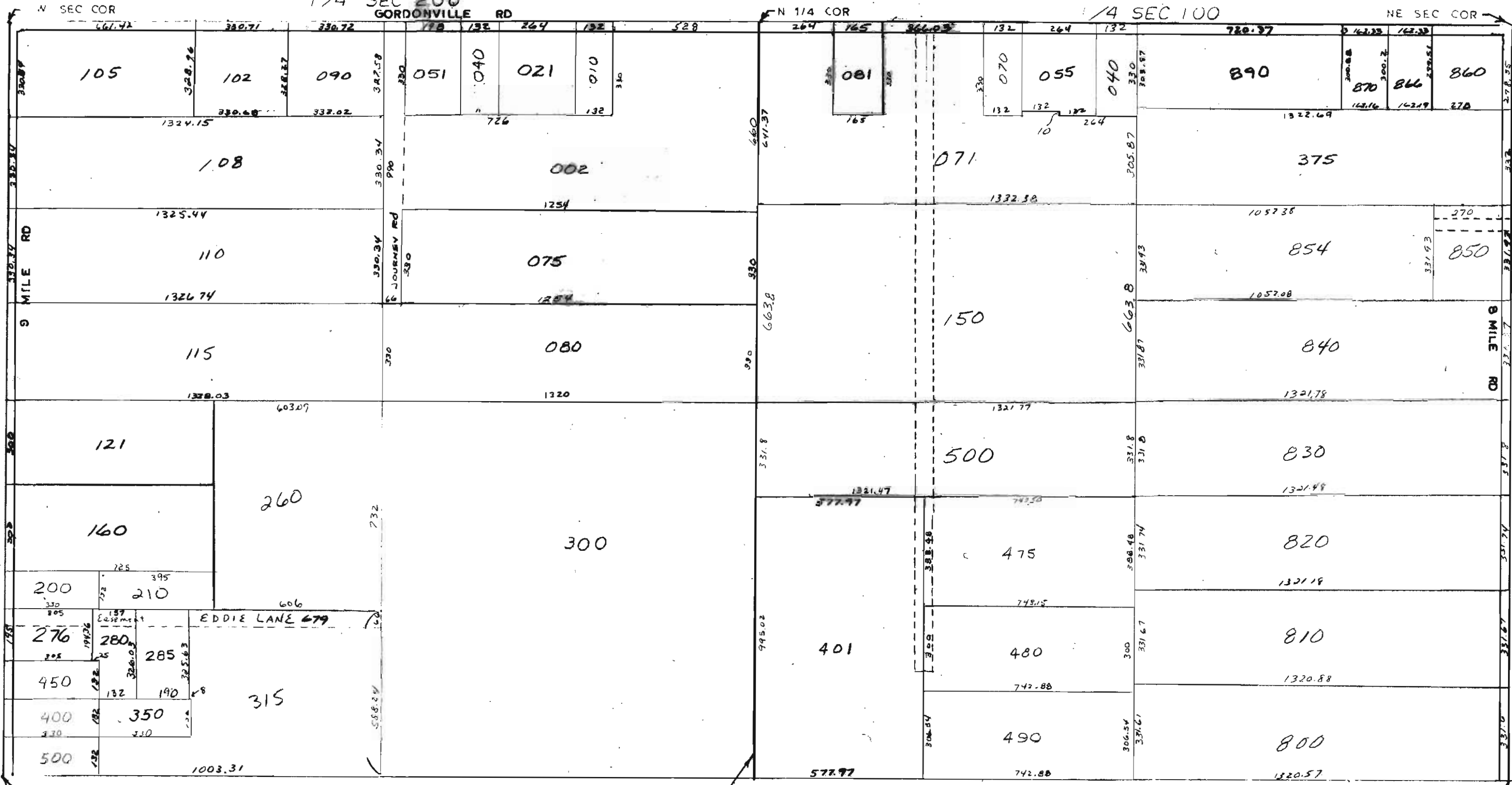


MIDLAND COUNTY
 EQUALIZATION DEPARTMENT
 MIDLAND, MICHIGAN 48640

1/4 SEC 200
 GORDONVILLE RD

1/4 SEC 100



N & S 1/4 LINE
 SCALE 1" = 300'
 P.E.G.

SCHOOL DIST

T14NR1W

LEE TOWNSHIP

REV. 12-14-70
 N1/2 SEC 34