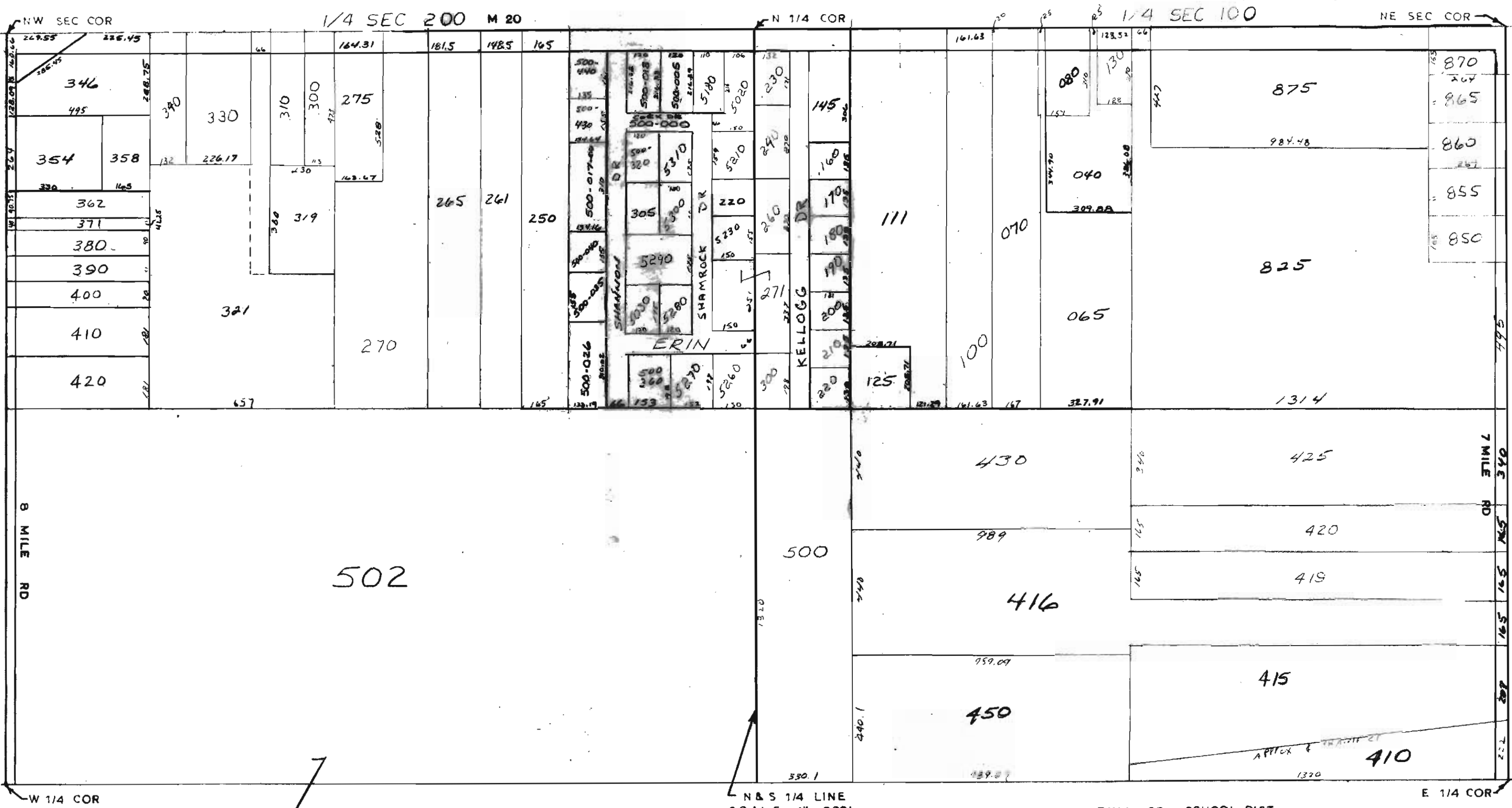


MIDLAND COUNTY
EQUALIZATION DEPARTMENT
MIDLAND, MICHIGAN 48640



N & S 1/4 LINE
SCALE 1" = 300'
P.E.G.

BULL. CR. SCHOOL DIST

T14N R1W

LEE TOWNSHIP

REV. 12-14-10
N1/2 SEC 14