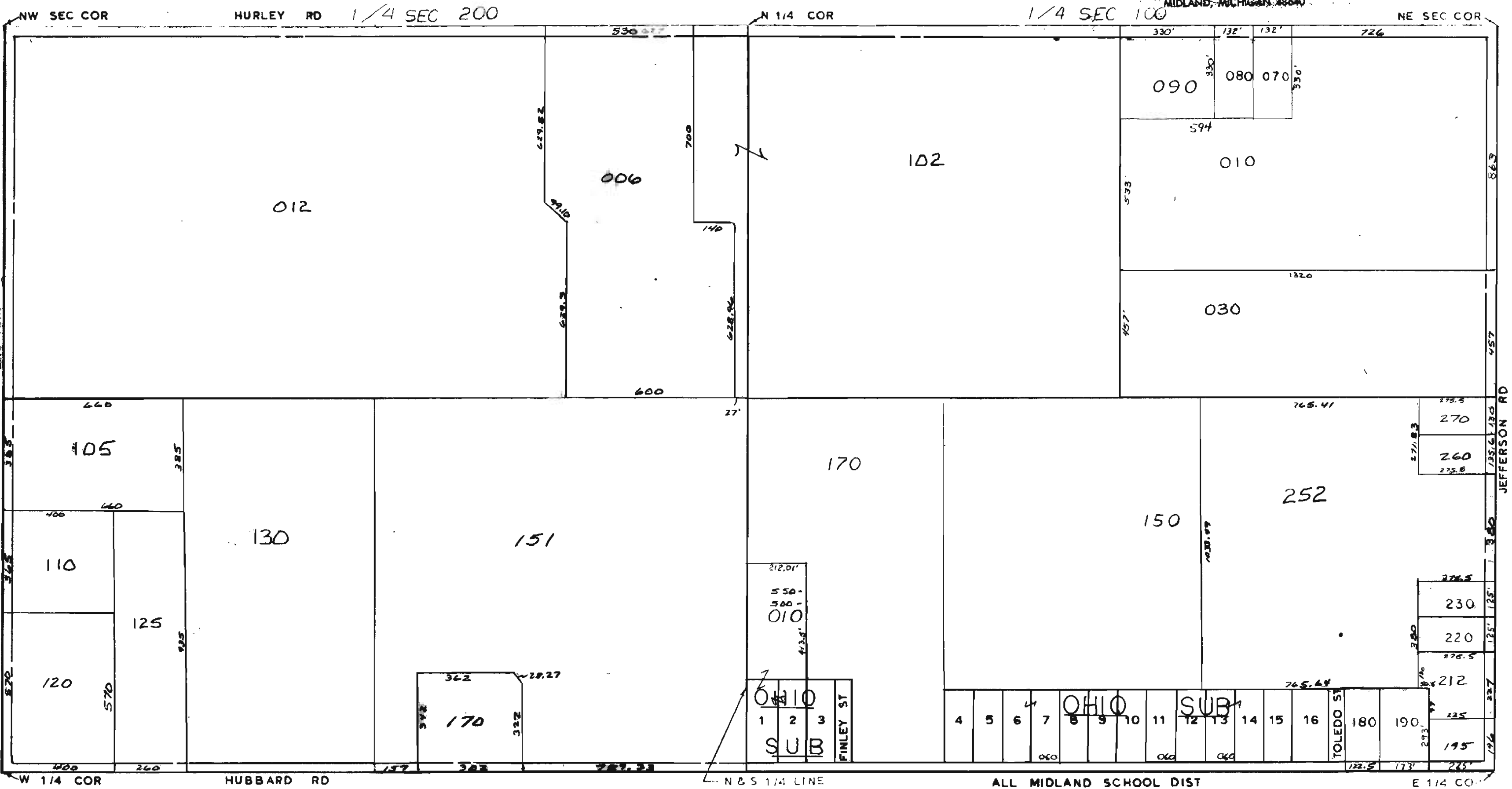


MIDLAND COUNTY
EQUALIZATION DEPARTMENT
MIDLAND, MICHIGAN 48640



N & S 1/4 LINE
SCALE 1" = 300'
DRAWN BY R.R.Y.

ALL MIDLAND SCHOOL DIST

LARKIN TOWNSHIP

REV. 12-13-10
N1/2 SEC 9

T15NR2E