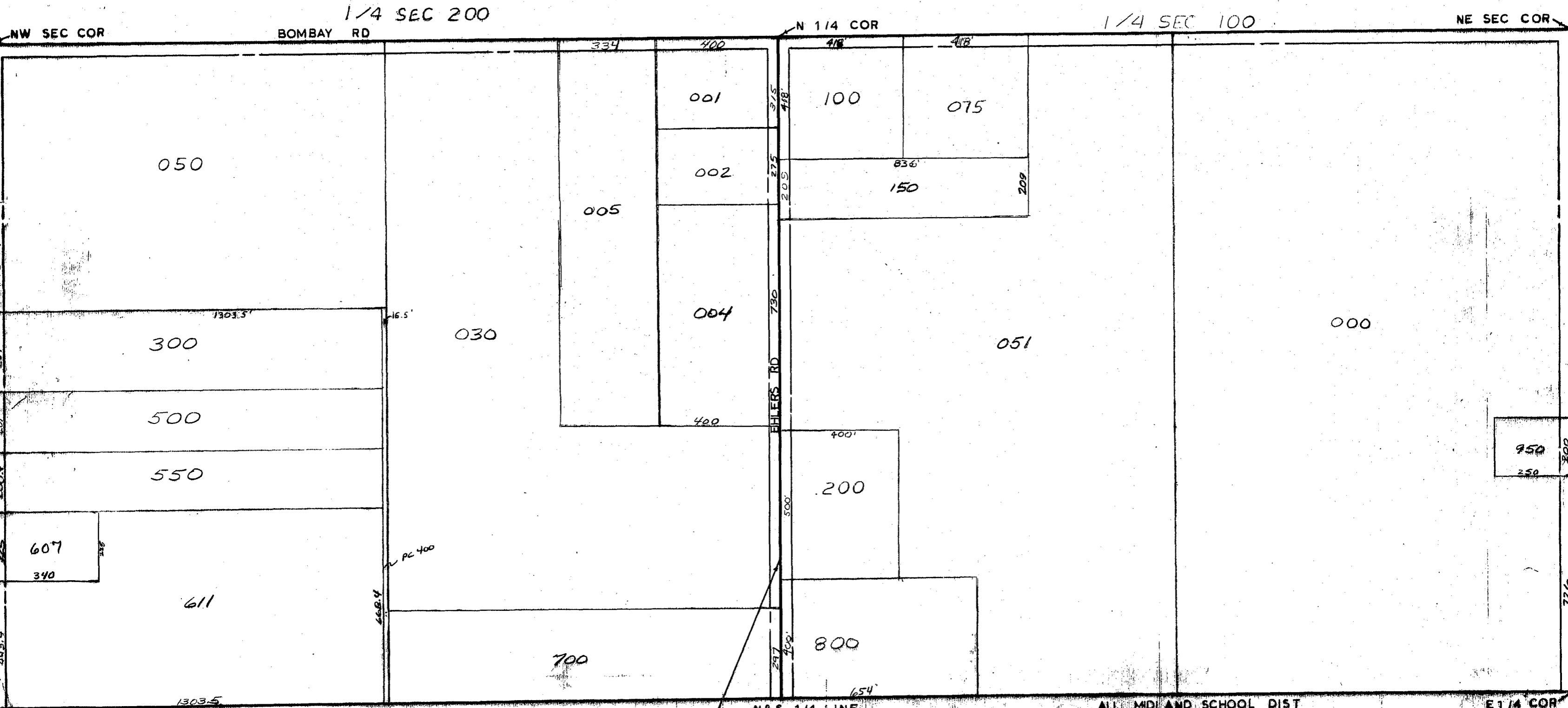


MIDLAND COUNTY  
EQUALIZATION DEPARTMENT  
MIDLAND, MICHIGAN 48640



W 1/4 COR

N&S 1/4 LINE  
SCALE 1"=300'  
DRAWN BY R.R.Y.

ALL MIDLAND SCHOOL DIST

E 1/4 COR

T 15N R 2E

LARKIN TOWNSHIP

REV. 11-24-98  
N 1/2 SEC 1