

NW SEC COR

1/4 SEC 200

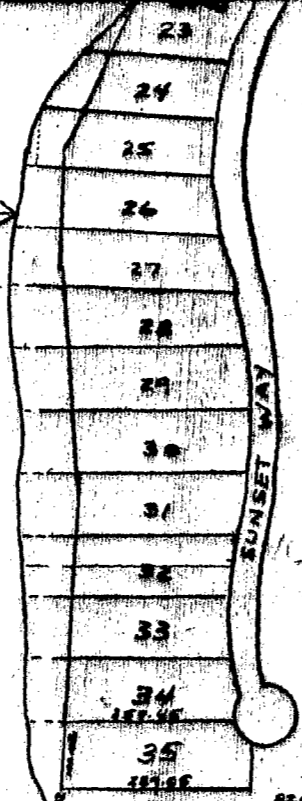
N 1/4 COR

1/4 SEC 100

NE SEC COR

SANFORD  
LAKE

SUNSET  
SHORES  
SITE  
CORP'S  
# 751



012

000

001

060

030

043

100

048

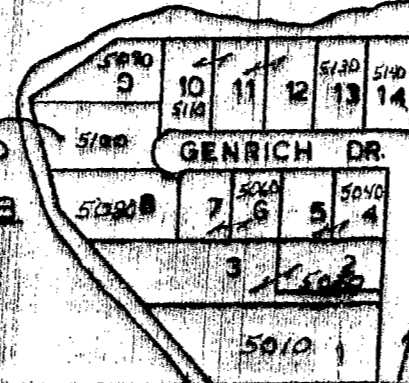
050

010

170 160 150 140

055

GENRICH  
POINT  
SUB



095

098

100

070

080

BARDEN RD

MERIDIAN SCHOOL DIST

W 1/4 COR

N & S 1/4 LINE  
SCALE 1" = 300'  
REG.

E 1/4 COR

T15N R1W

JEROME TOWNSHIP

REV. 12-18-07  
N1/2 SEC 12