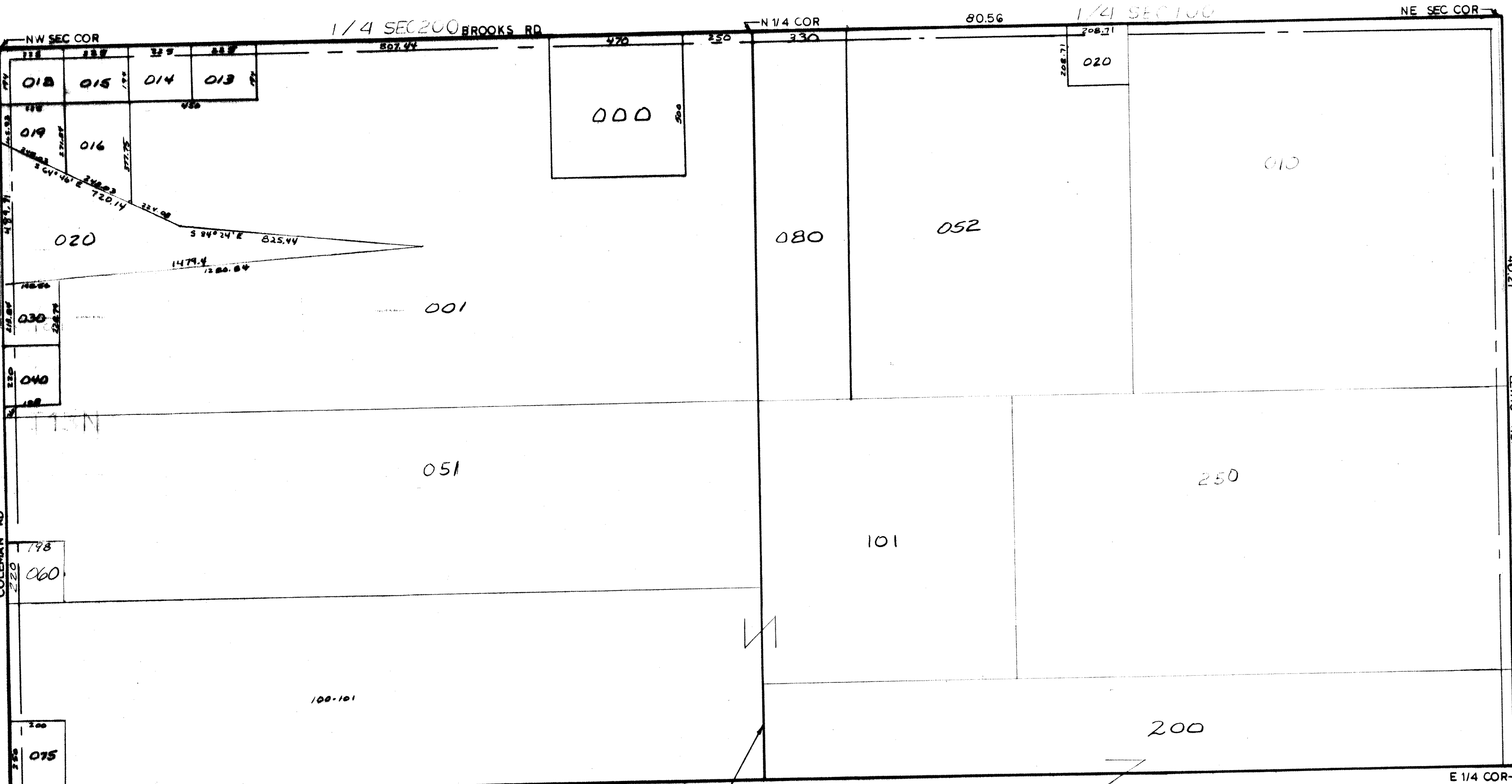


MIDLAND COUNTY
EQUALIZATION DEPARTMENT
MIDLAND, MICHIGAN 48640



N & S 1/4 LINE
SCALE 1" = 300'
DRAWN BY REG.

N 1/2, ALL ST.L. SCHOOL DIST

T13N R2W

JASPER TOWNSHIP

REV. 12-12-06
N 1/2 SEC 8