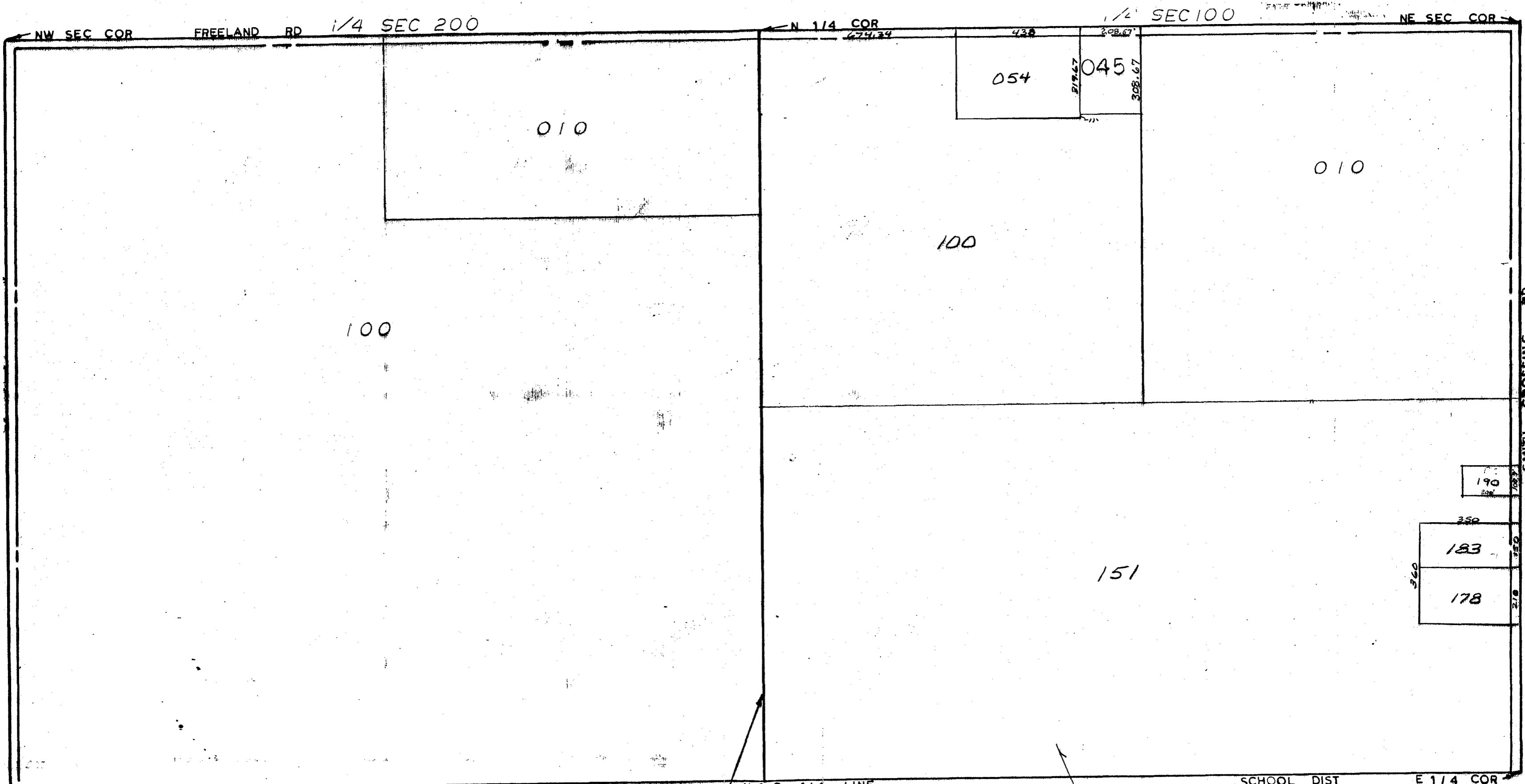


MIDLAND COUNTY
Revaluation Department
1812 James Savage Road
Midland, MI 48640



NW SEC COR

FREELAND RD

1/4 SEC 200

N 1/4 COR

1/2 SEC 100

NE SEC COR

010

054

045

010

100

100

151

190

183

178

SMITH CROSSING RD

W 1/4 COR

N & S 1/4 LINE
SCALE 1" = 300'
DRAWN BY R.R.Y.

SCHOOL DIST
AS NOTED

E 1/4 COR

T 13N R2E

INGERSOLL TOWNSHIP

REV 12-6-00
N1/2SEC23