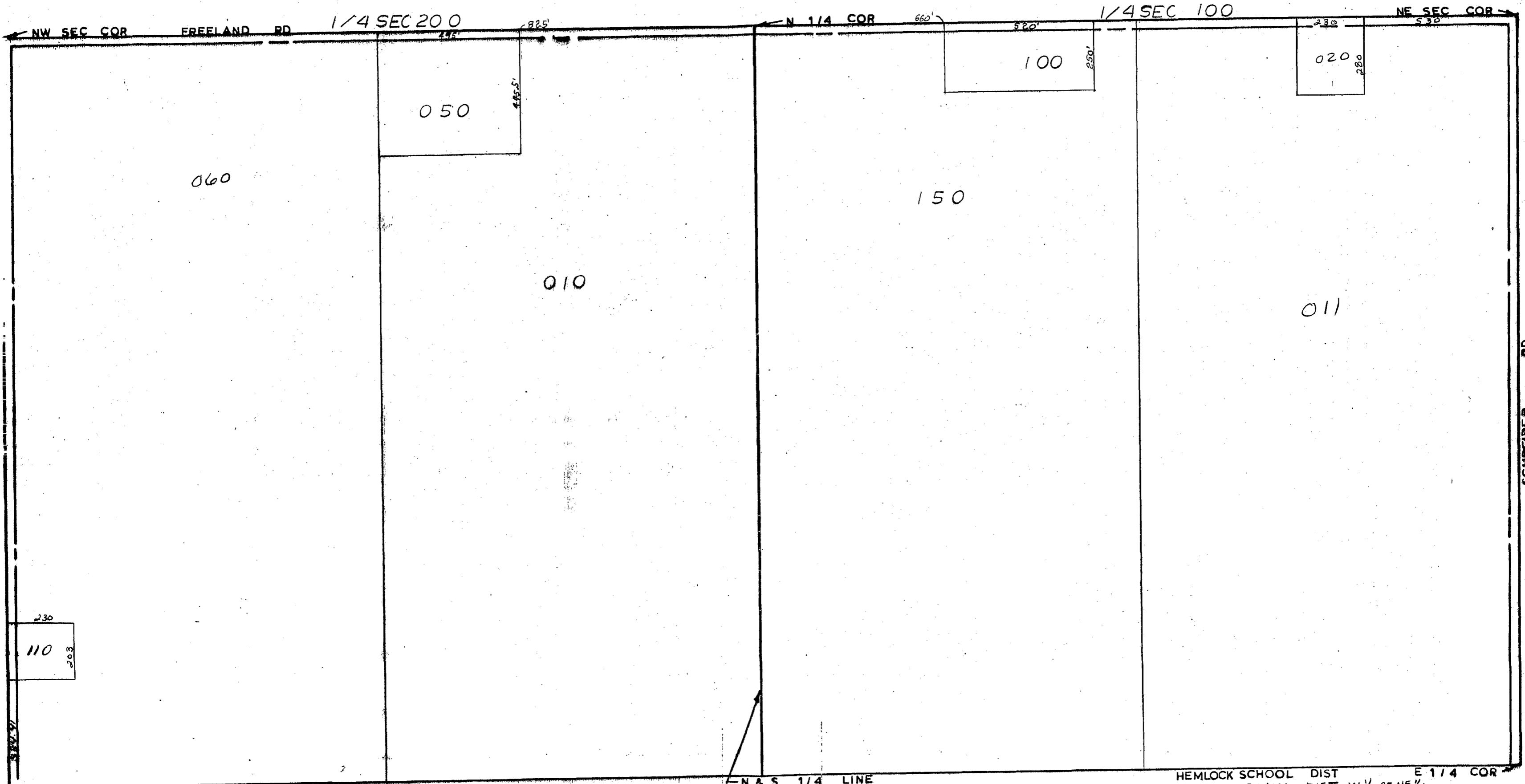


MIDLAND COUNTY
Equalization Department
1212 James Savage Road
Midland, MI 48640



N & S 1/4 LINE
SCALE 1" = 300'
DRAWN BY R.R.Y.

HEMLOCK SCHOOL DIST E 1/4 COR
MIDLAND SCHOOL DIST W 1/4 OF NE 1/4

T 13N R2E

INGERSOLL TOWNSHIP

REV. 12-3-90
N1/2SEC22