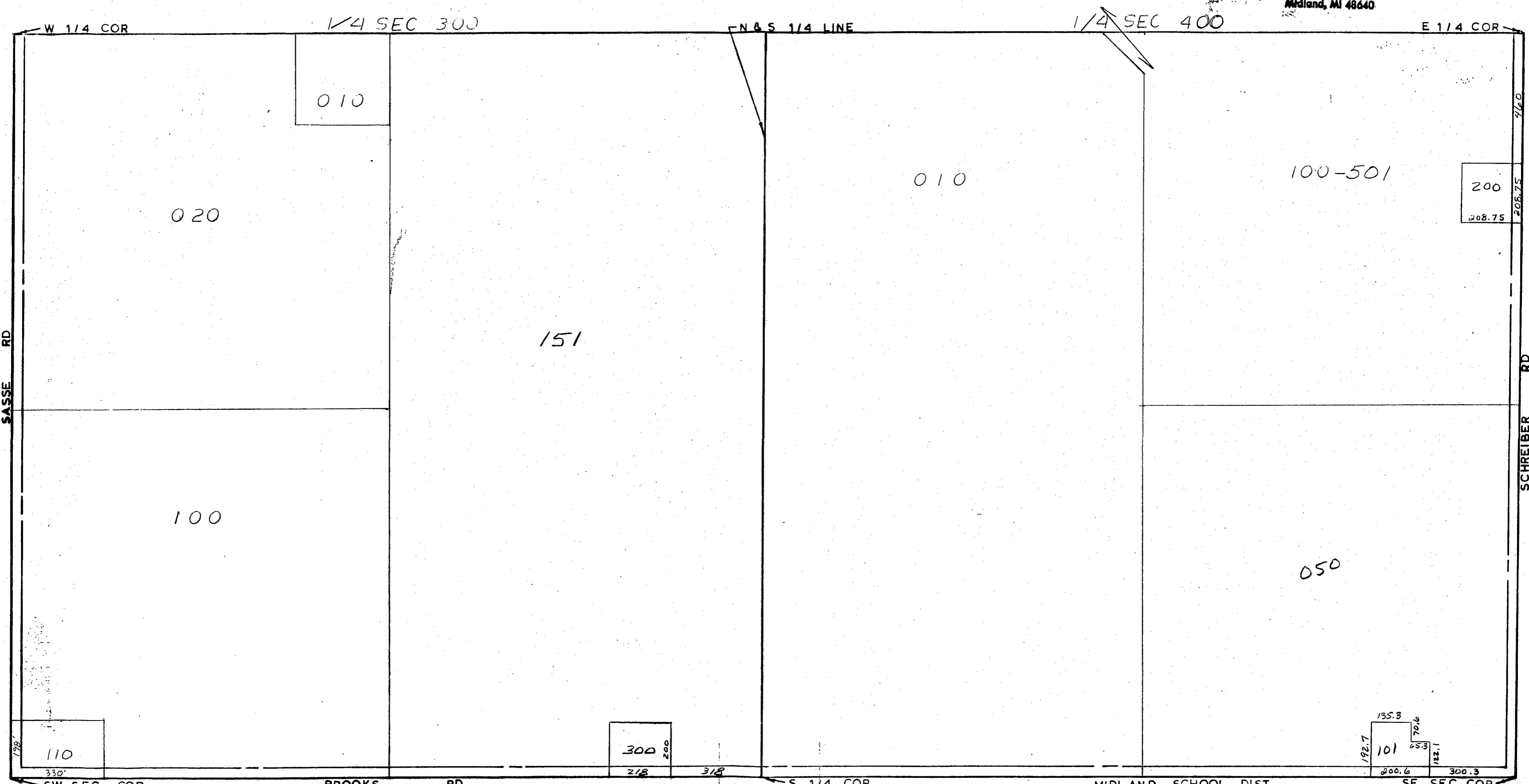


MIDLAND COUNTY  
Equalization Department  
1212 James Savage Road  
Midland, MI 48640



SCALE 1" = 300'  
DRAWN BY R.R.Y.

MIDLAND SCHOOL DIST  
EXCEPT W 1/4, BULLOCK  
CREEK SCHOOL DIST

T13N R2E

INGERSOLL TOWNSHIP

REV 12-5-01  
S1/2SEC10