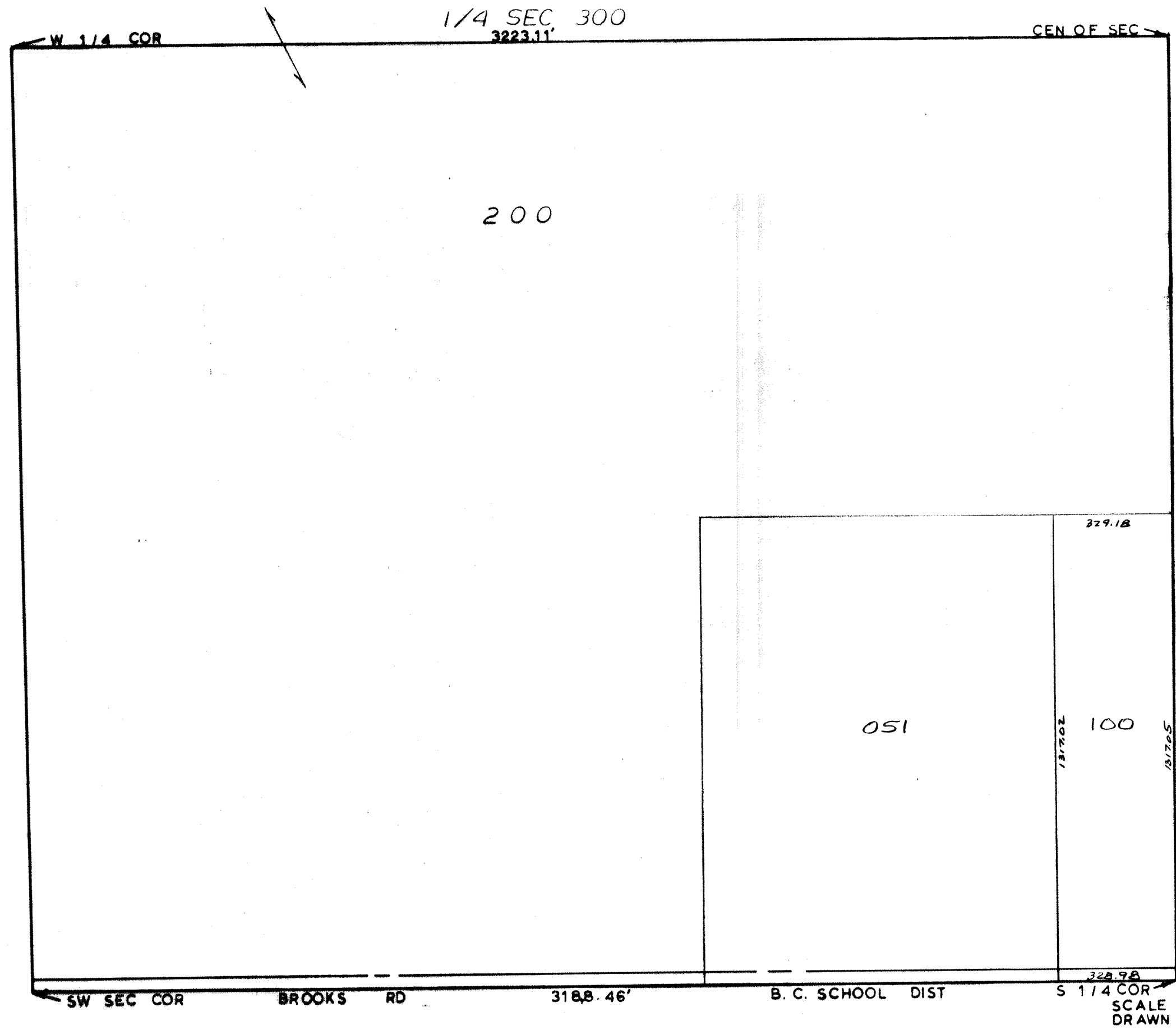


MIDLAND COUNTY
Equalization Department
1212 James Savage Road
Midland, MI 48640



329.18

051

100

329.98

W 1/4 COR

1/4 SEC 300
3223.11'

CEN OF SEC

SW SEC COR

BROOKS RD

3188.46'

B. C. SCHOOL DIST

S 1/4 COR

SCALE
DRAWN

1" = 300'
BY R.R.Y.

T 12N R 25E

INGERSOLL TOWNSHIP

REV 12-12-06
SW1/4SEC7