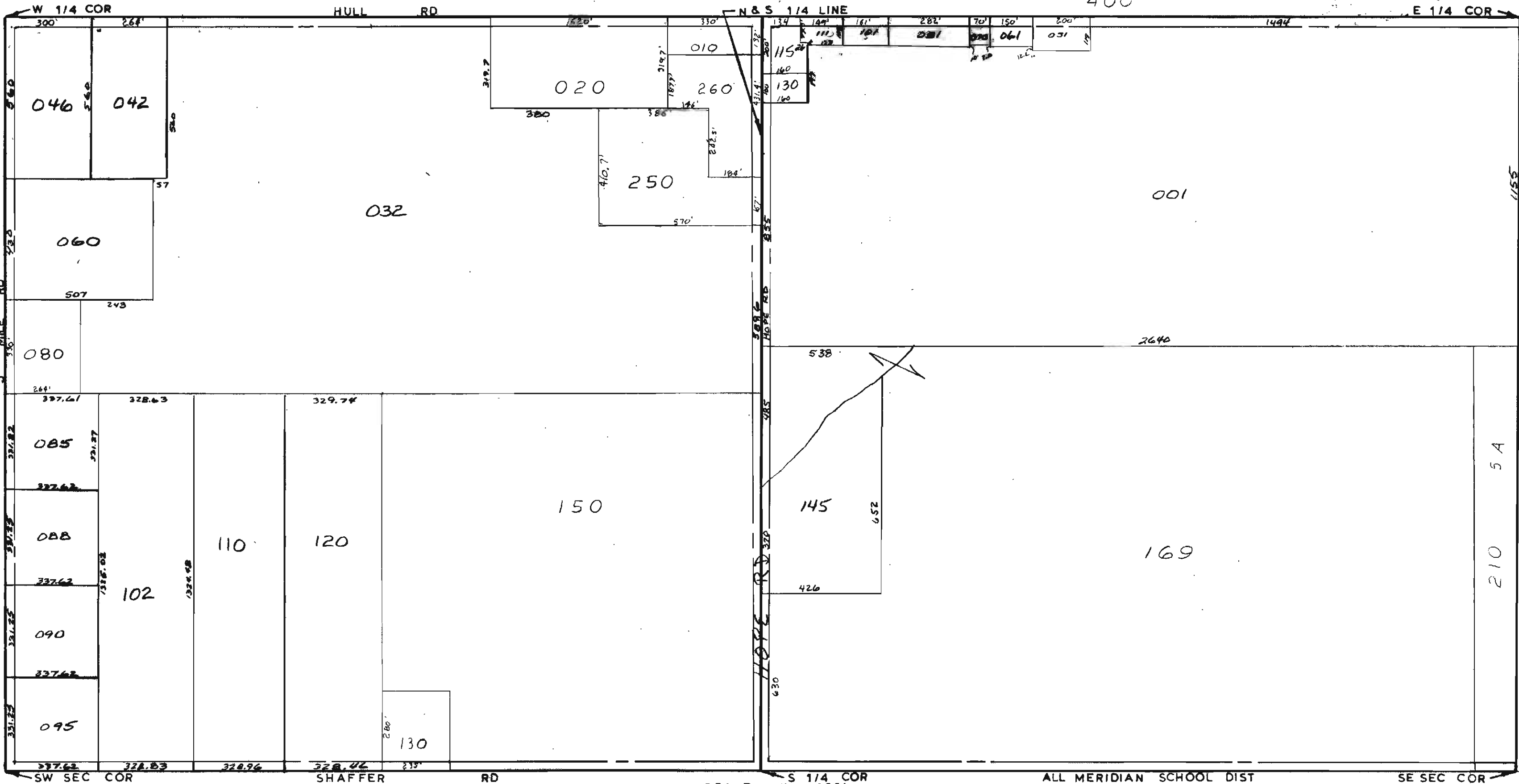


ANN ARBOR COUNTY
Engineering Department
1212 James Street
Ann Arbor, MI 48106

1/4 SEC
300

1/4 SEC
400



SCALE
DRAWN 1" = 300'
BY R. R. Y.

ALL MERIDIAN SCHOOL DIST

T 16N R 1E

HOPE TOWNSHIP

REV. 12-15-10
S1/2SEC27