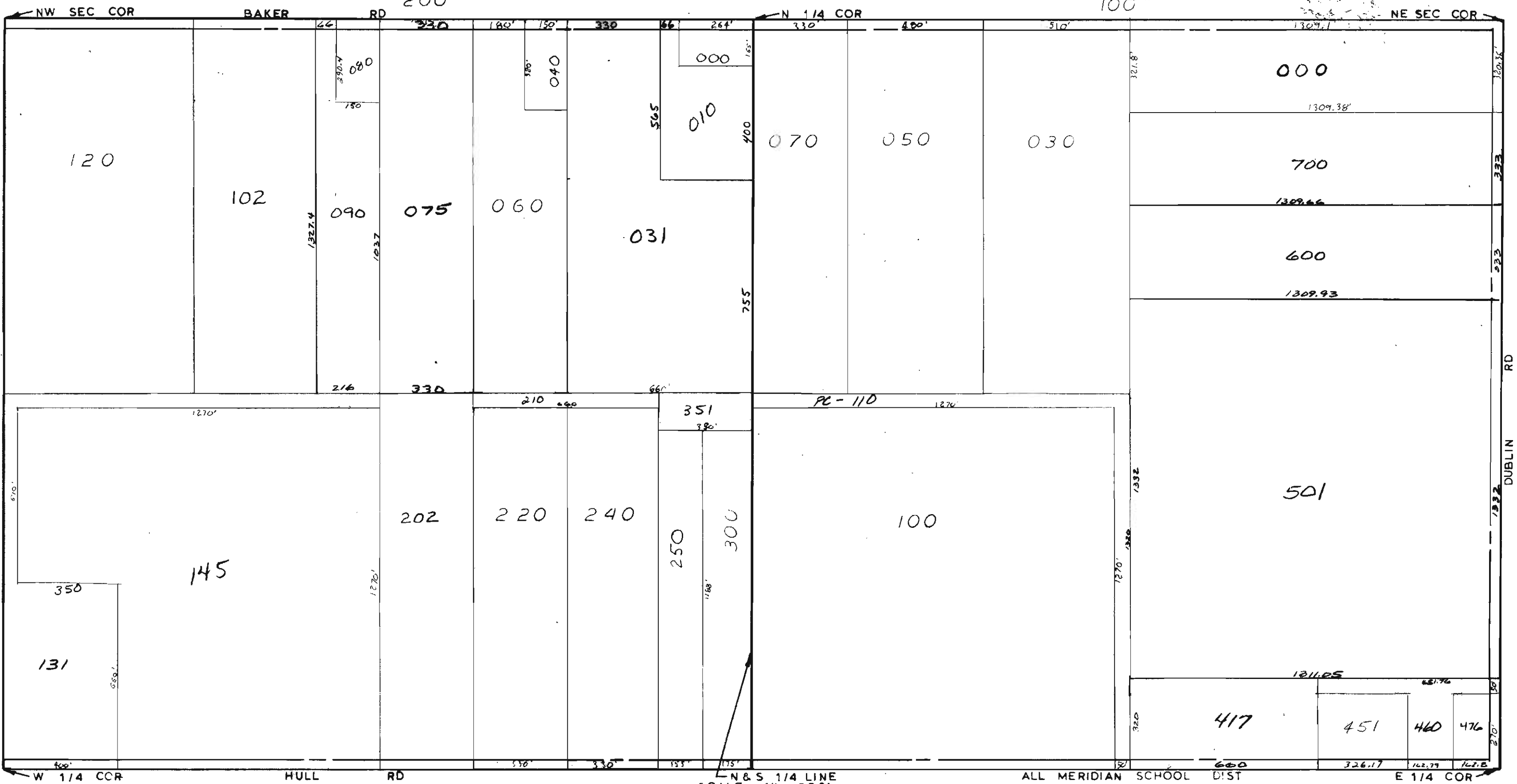


MIDLAND COUNTY
Engineering Department
3172 James Street
Midland, TX 79701

1/4 SEC
200

1/4 SEC
100



N & S 1/4 LINE
SCALE 1" = 300'
DRAWN BY R.R.Y.

ALL MERIDIAN SCHOOL DIST

T16N R1E

HOPE TOWNSHIP

REV. 12-15-10
N1/2 SEC 25