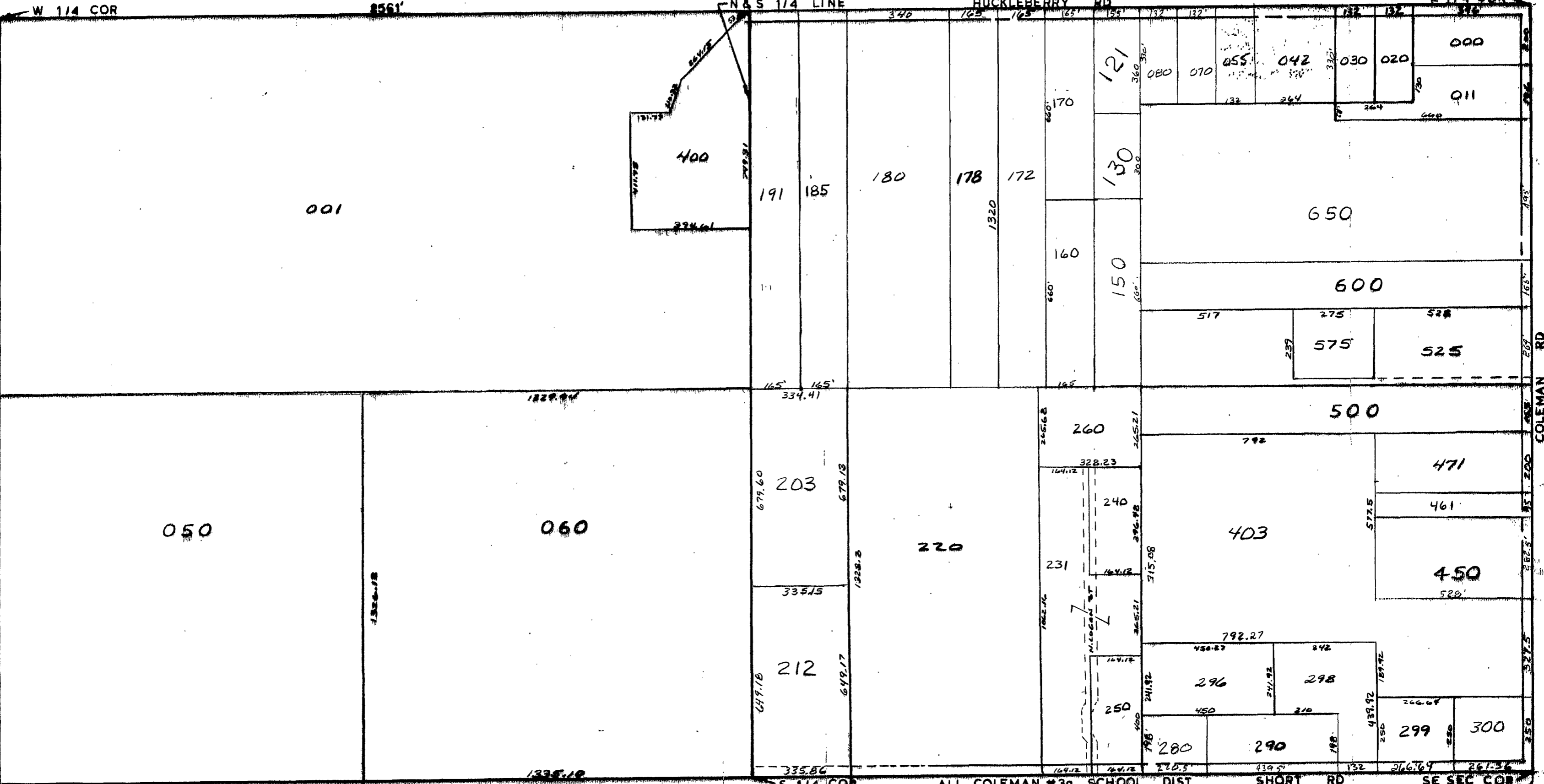


MIDLAND COUNTY
Equalization Department
1212 James Harvey Road
Midland, TX 79701

1/4 SEC 300

1/4 SEC 400



W 1/4 COR 2561' N & S 1/4 LINE HUCKLEBERRY RD 1/4 SEC 400 E 1/4 COR 2561'
SW SEC COR 2561' S 1/4 COR ALL COLEMAN #3g SCHOOL DIST SHORT RD SE SEC COR

SCALE DRAWN 1" = 300' BY R.R.Y.

T 15N R 2W

GENEVA TOWNSHIP

REV. 12-15-62
S1/2SEC31