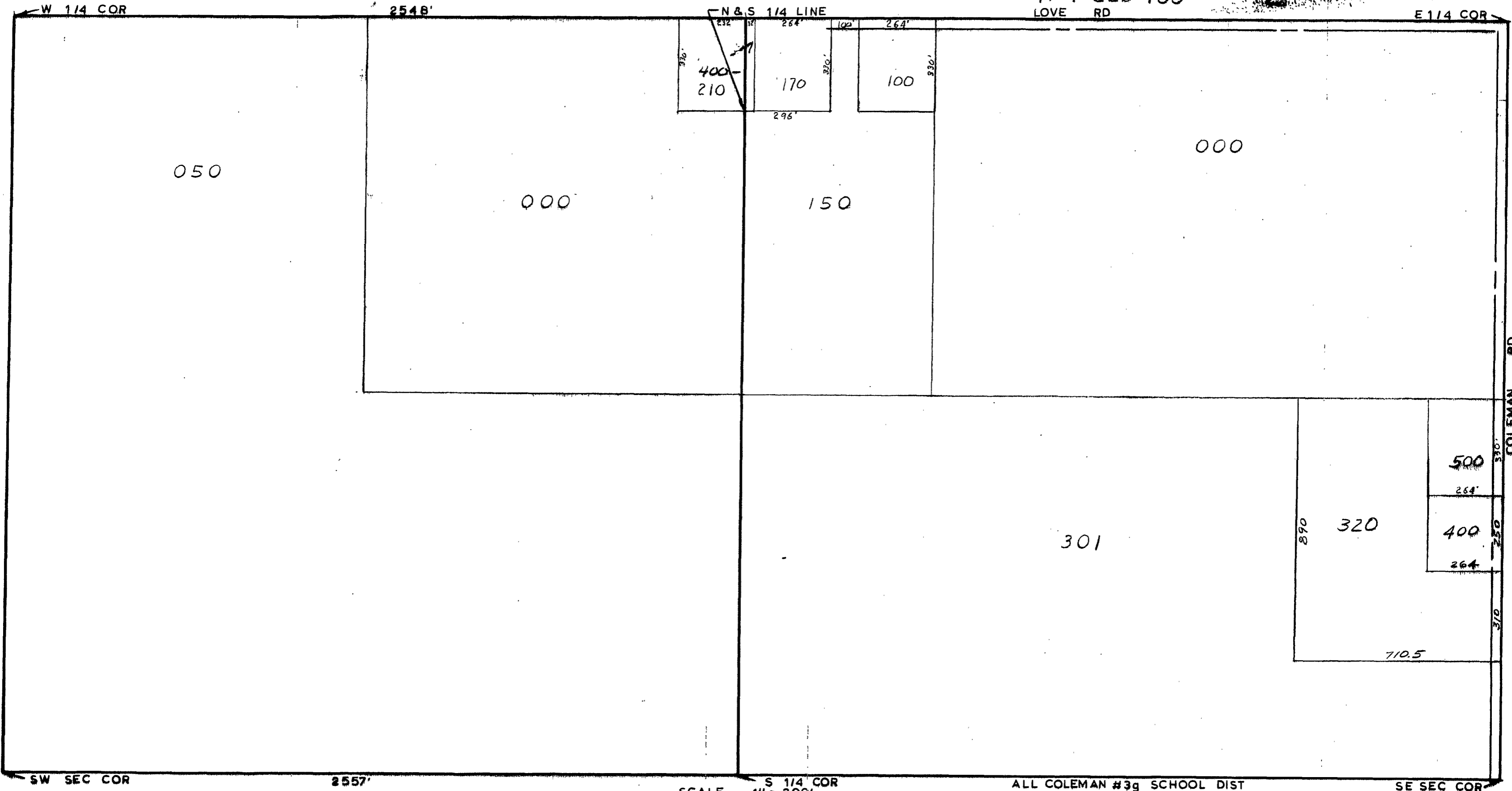


MIDLAND COUNTY  
Equalization Department  
1212 Jesse Soward Road

1/4 SEC 300  
2548'

1/4 SEC 400  
LOVE RD



SCALE 1" = 300'  
DRAWN BY R.R.Y.

ALL COLEMAN #3g SCHOOL DIST

T 15N R 2W

GENEVA TOWNSHIP

REV. 12-6-93  
S 1/2 SEC 30