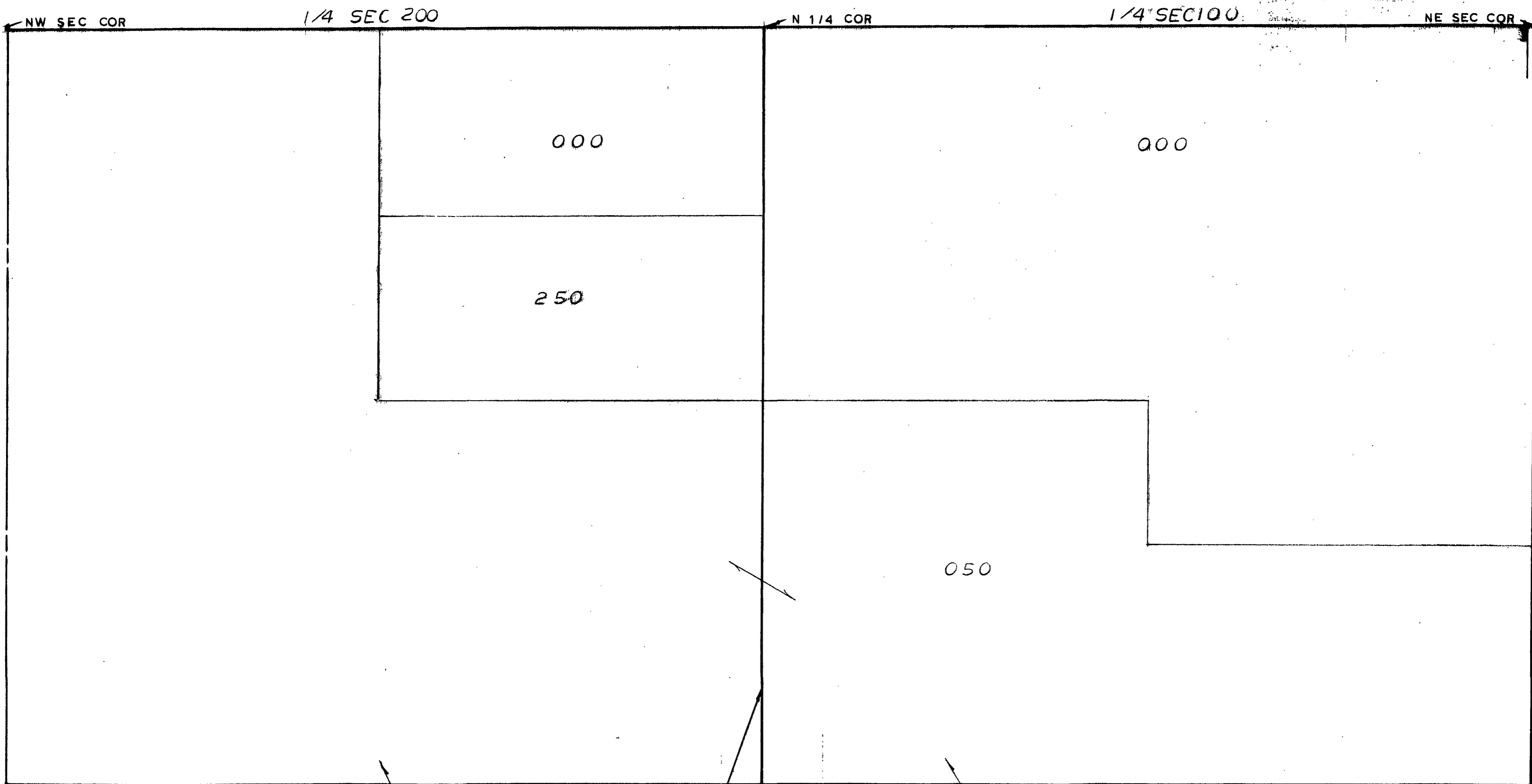


MARLAND COUNTY  
Equalization Department  
1212 James Street  
Annapolis, MD



1/4 SEC 200

1/4 SEC 100

000

000

250

050

N & S 1/4 LINE  
SCALE 1" = 300'  
DRAWN BY R.R.Y.

ALL COLEMAN #3g SCHOOL DIST

T 15N R 2W

GENEVA TOWNSHIP

REV. N 1/2 SEC 29