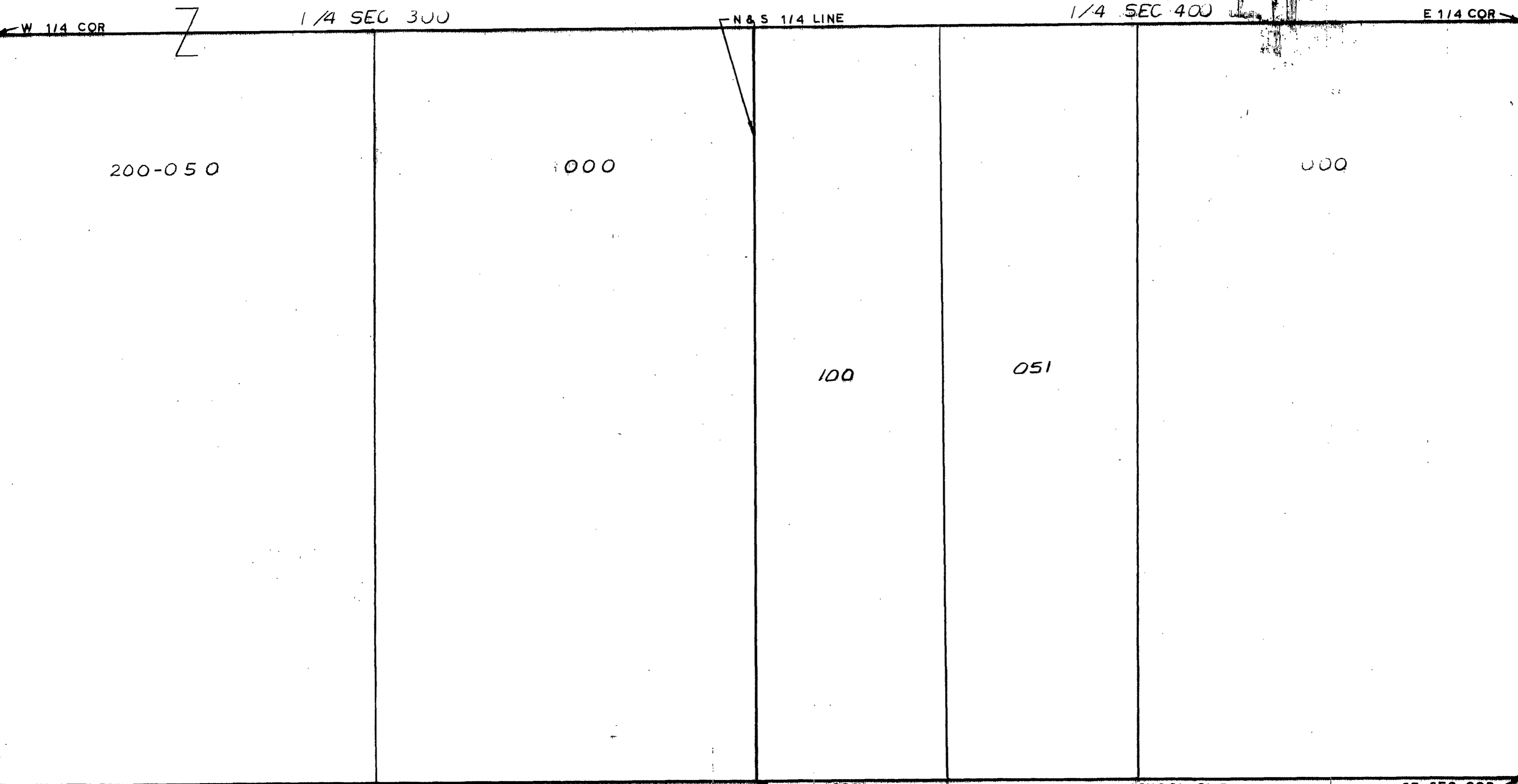


MIDLAND COUNTY  
Department of  
Public Works  
2010



200-050

1000

100

051

000

W 1/4 COR

1/4 SEC 300

N & S 1/4 LINE

1/4 SEC 400

E 1/4 COR

SW SEC COR

SCALE  
DRAWN

S 1/4 COR  
1" = 300'  
BY R.R.Y.

ALL COLEMAN #3g SCHOOL DIST

SE SEC COR

T 15N R 2W

GENEVA TOWNSHIP

REV. 12-4-01  
S1/2SEC28