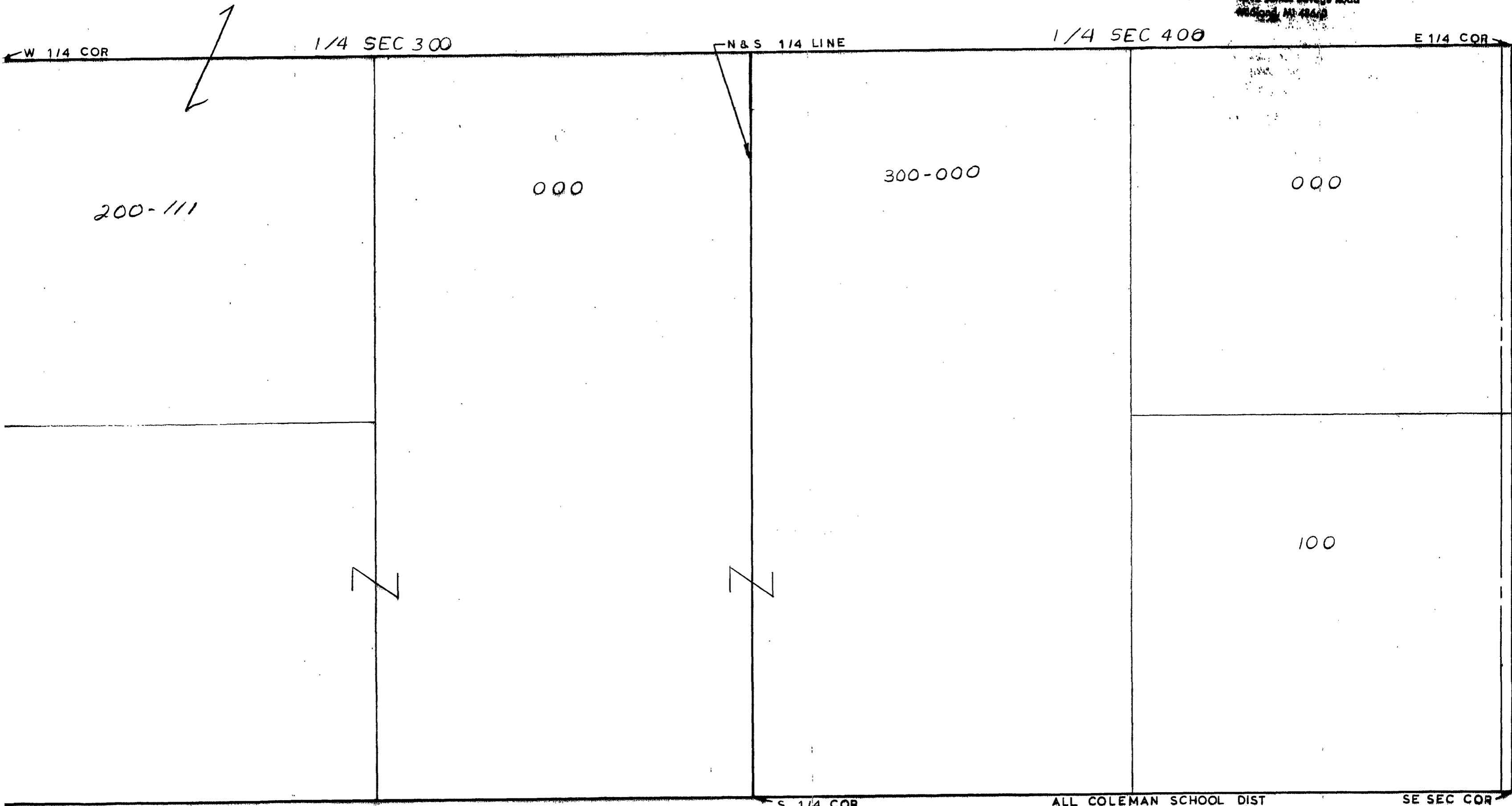


MIDLAND COUNTY
Registration Department
1212 James Savage Road
Midland, MI 48640



200-111

000

300-000

000

100

W 1/4 COR

1/4 SEC 300

N & S 1/4 LINE

1/4 SEC 400

E 1/4 COR

SW SEC COR

S 1/4 COR

ALL COLEMAN SCHOOL DIST

SE SEC COR

SCALE 1" = 300'
DRAWN BY R.R.Y.

MAGRUDDER RD

T15N R2W

GENEVA TOWNSHIP

REV. 12-11-89
S1/2SEC26