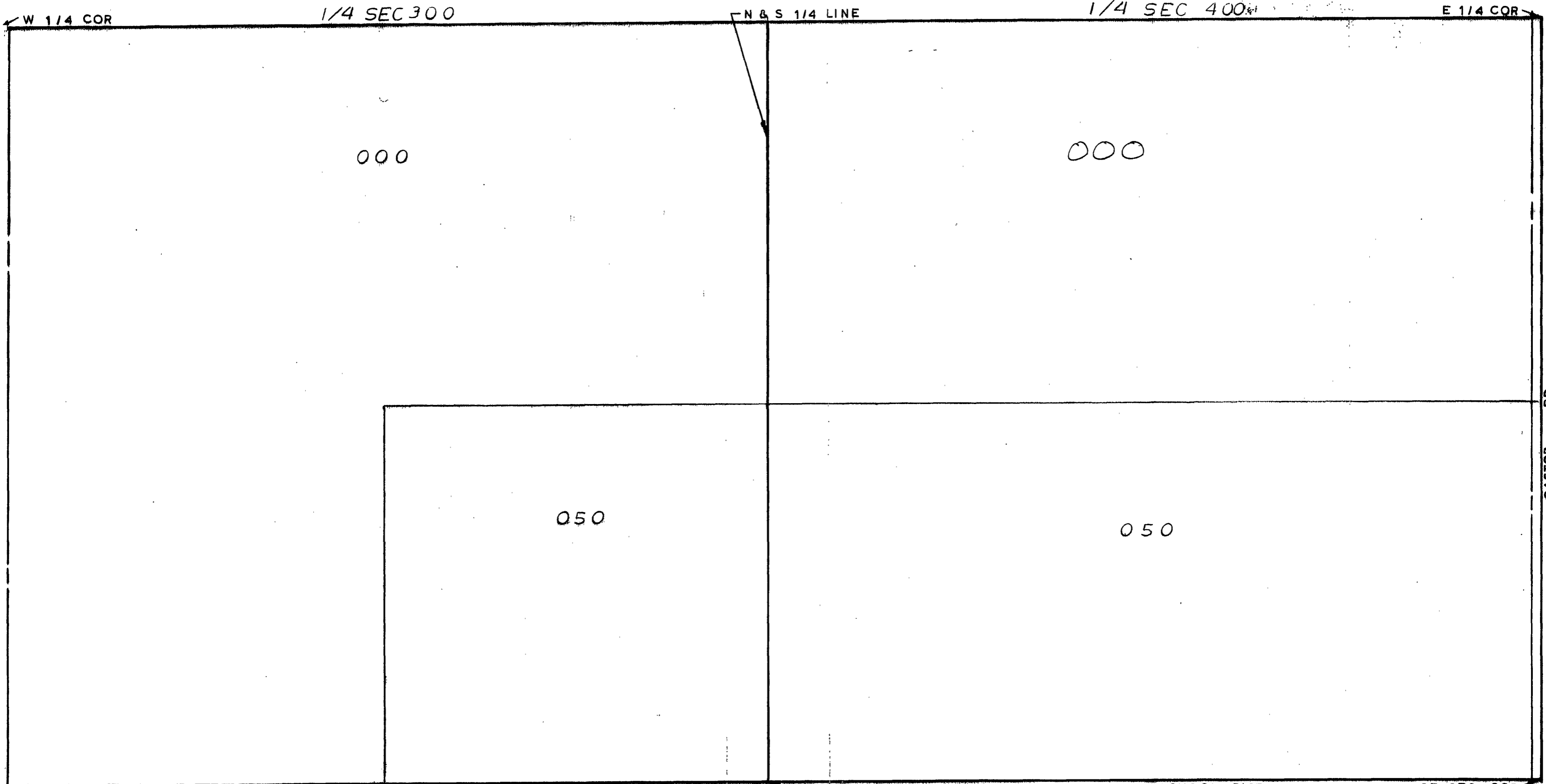


MIDLAND COUNTY
Registration Department
1212 James Savage Road
Midland, MI 48640



SCALE
DRAWN BY R.R.Y.

S 1/4 COR
1" = 300'

ALL COLEMAN SCHOOL DIST

SE SEC COR

T 15N R 2W

GENE VA TOWNSHIP

REV. 12-14-81
S 1/2 SEC 25