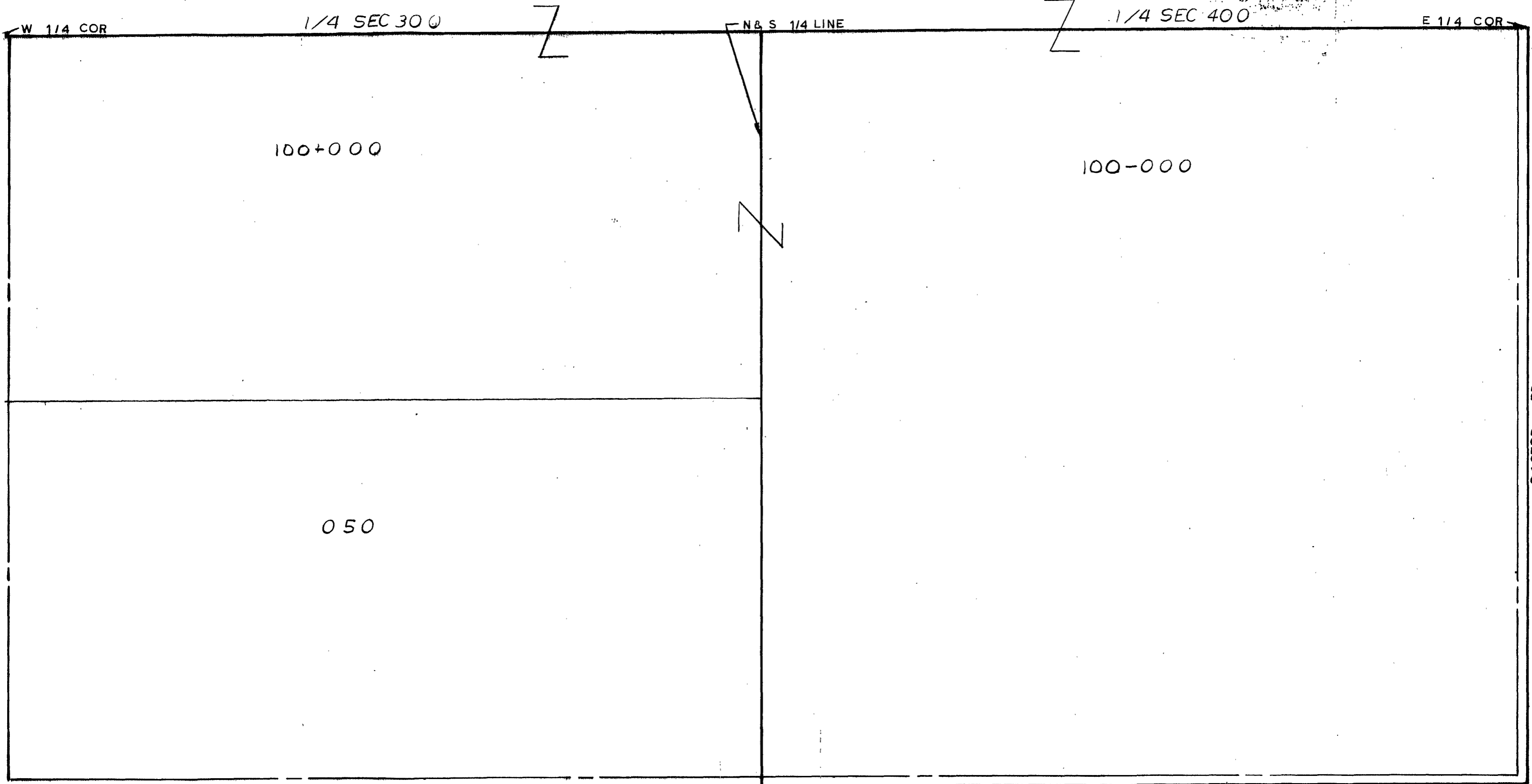


MIDLAND COUNTY  
Registration Department  
1212 Janet Savage Road  
Midland, MI 48640



W 1/4 COR

1/4 SEC 300

N & S 1/4 LINE

1/4 SEC 400

E 1/4 COR

100+000

100-000

050

SW SEC COR

NIELSEN RD

SCALE  
DRAWN

S 1/4 COR  
1" = 300'  
BY R.R.Y.

ALL COLEMAN SCHOOL DIST

SE SEC COR

CASTOR RD

T15NR2W

GENEVA TOWNSHIP

REV. 11-21-79  
S1/2SEC 24