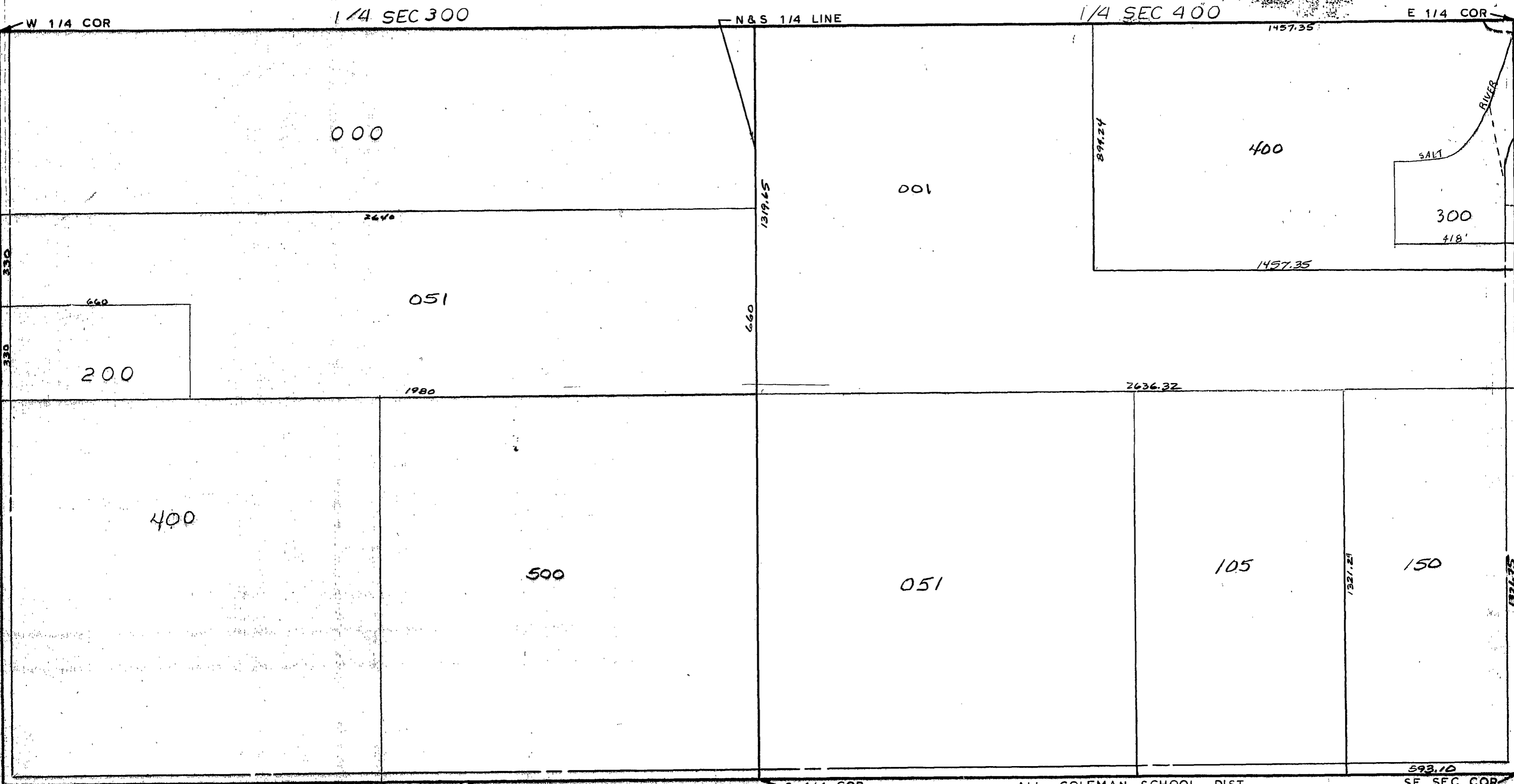


MIDLAND COUNTY
Equalization Department
1212 James Savage Road
Midland, MI 48640



SW SEC COR

McNALLY RD

SCALE
DRAWN BY R.R.Y.
1" = 300'

ALL COLEMAN SCHOOL DIST

SE SEC COR

T 15N R 2W

GENEVA TOWNSHIP

REV. 12-10-04
S 1/2 SEC 16