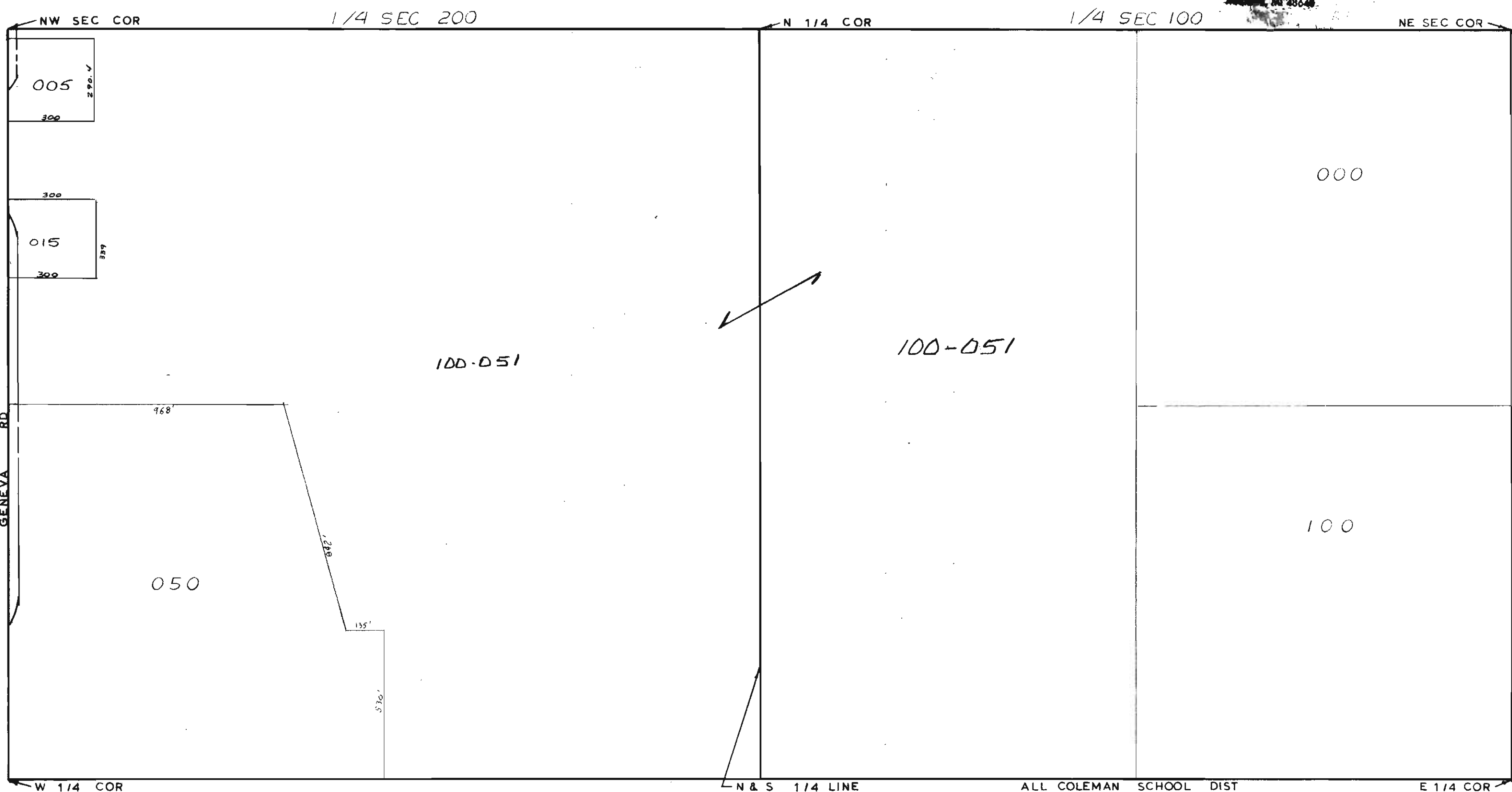


MIDLAND COUNTY
Registration Department
114 1/2 Johna Savage Road
Mason, MI 48840



N & S 1/4 LINE
SCALE 1" = 300'
DRAWN BY R.R.Y.

ALL COLEMAN SCHOOL DIST

T15N R2W

GENEVA TOWNSHIP

REV. 12-8-70
N1/2SEC15