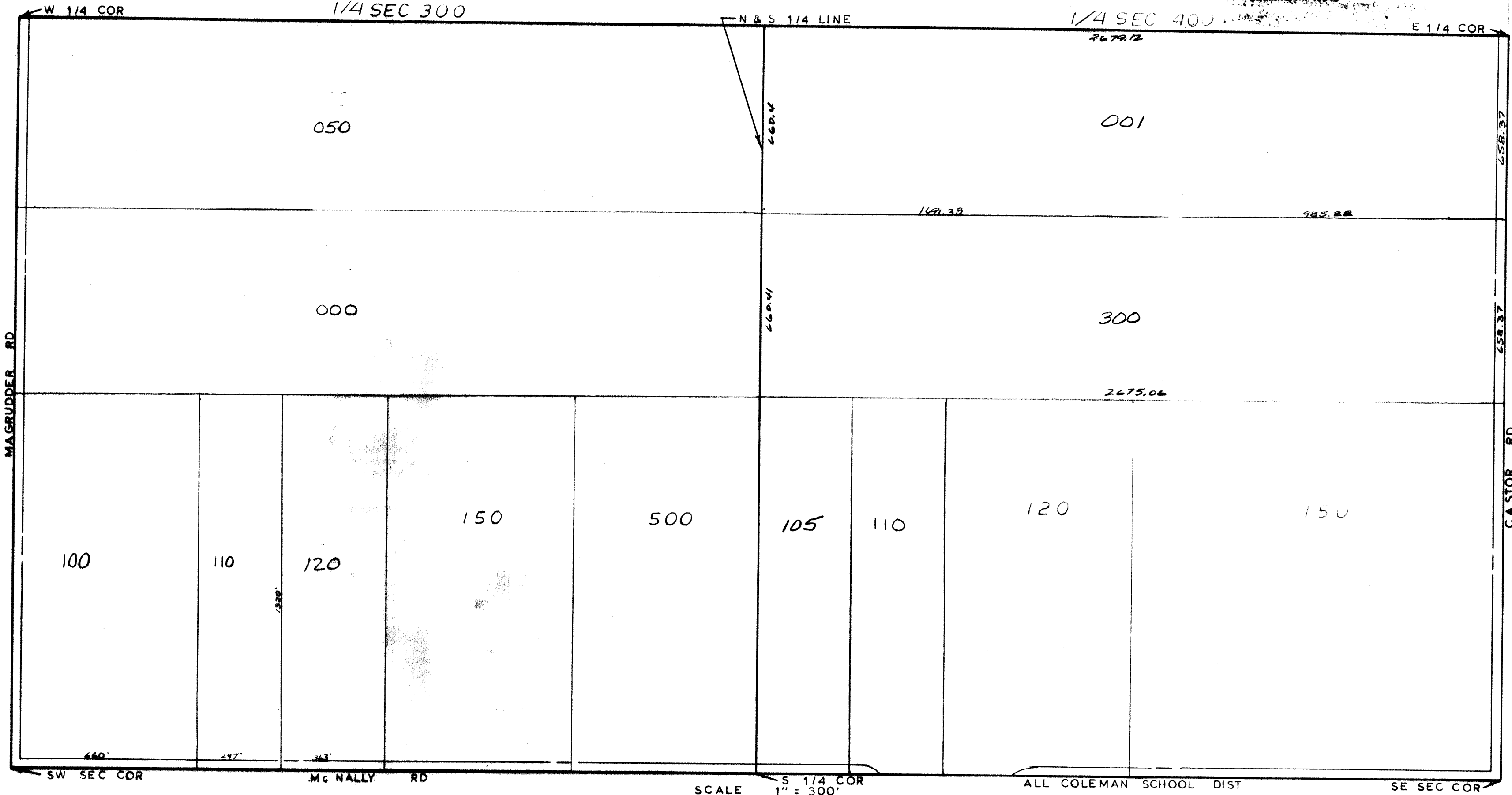


MIDLAND COUNTY
Evaluating Department
1212 Jones Savage Road
Midland, MI 48640



SCALE
DRAWN BY R.R.Y.
1" = 300'

ALL COLEMAN SCHOOL DIST

T 15N R 2W

GENEVA TOWNSHIP

REV. 12-11-06
S1/2 SEC 13