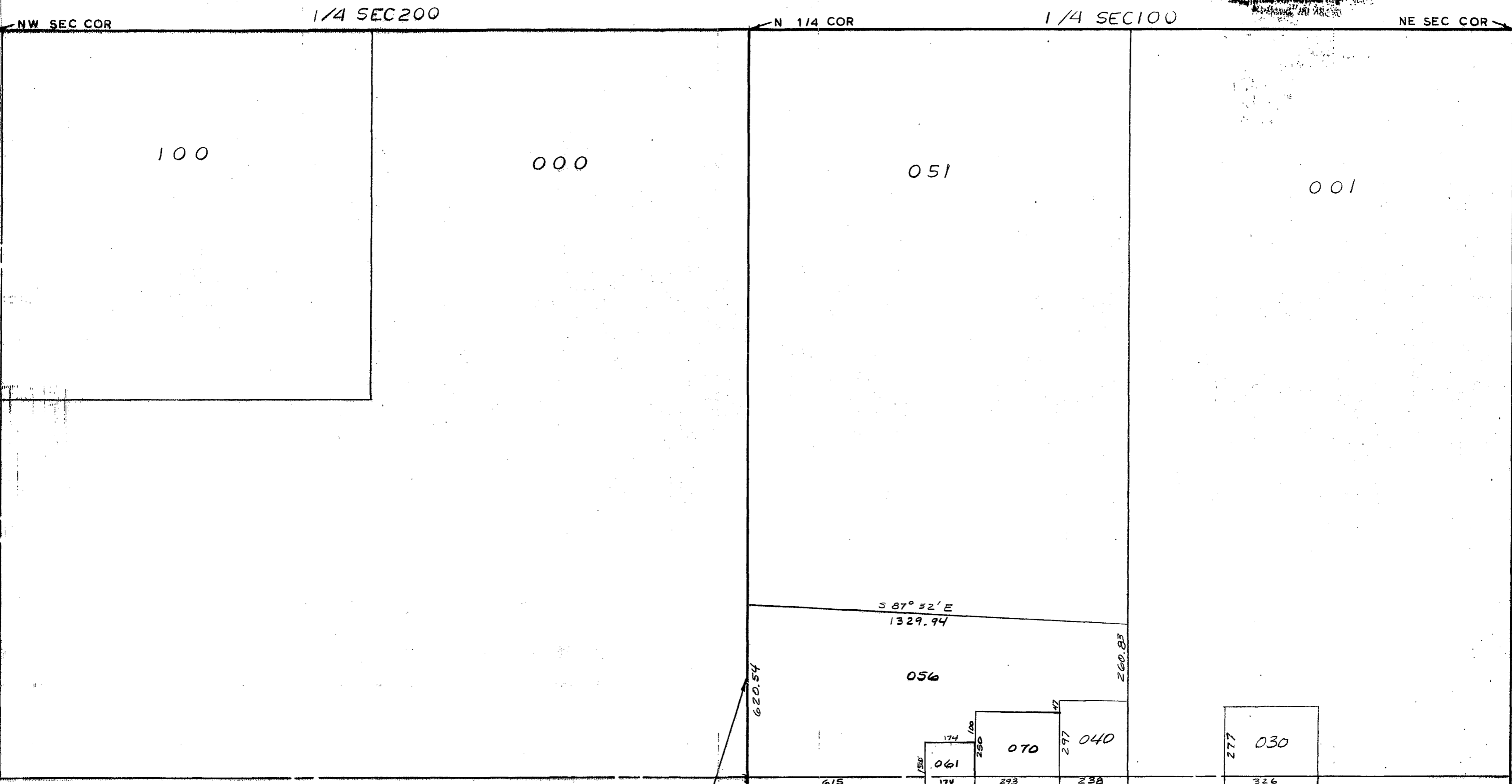


MIDLAND COUNTY
Health Department
12123rd Ave, Savage Road
Midland, MI 49640
Phone: 268-2800



N & S 1/4 LINE
SCALE 1" = 300'
DRAWN BY R.R.Y.

ALL COLEMAN SCHOOL DIST

T 15N R 2W

GENEVA TOWNSHIP

REV. 12-11-03
N1/2SEC11