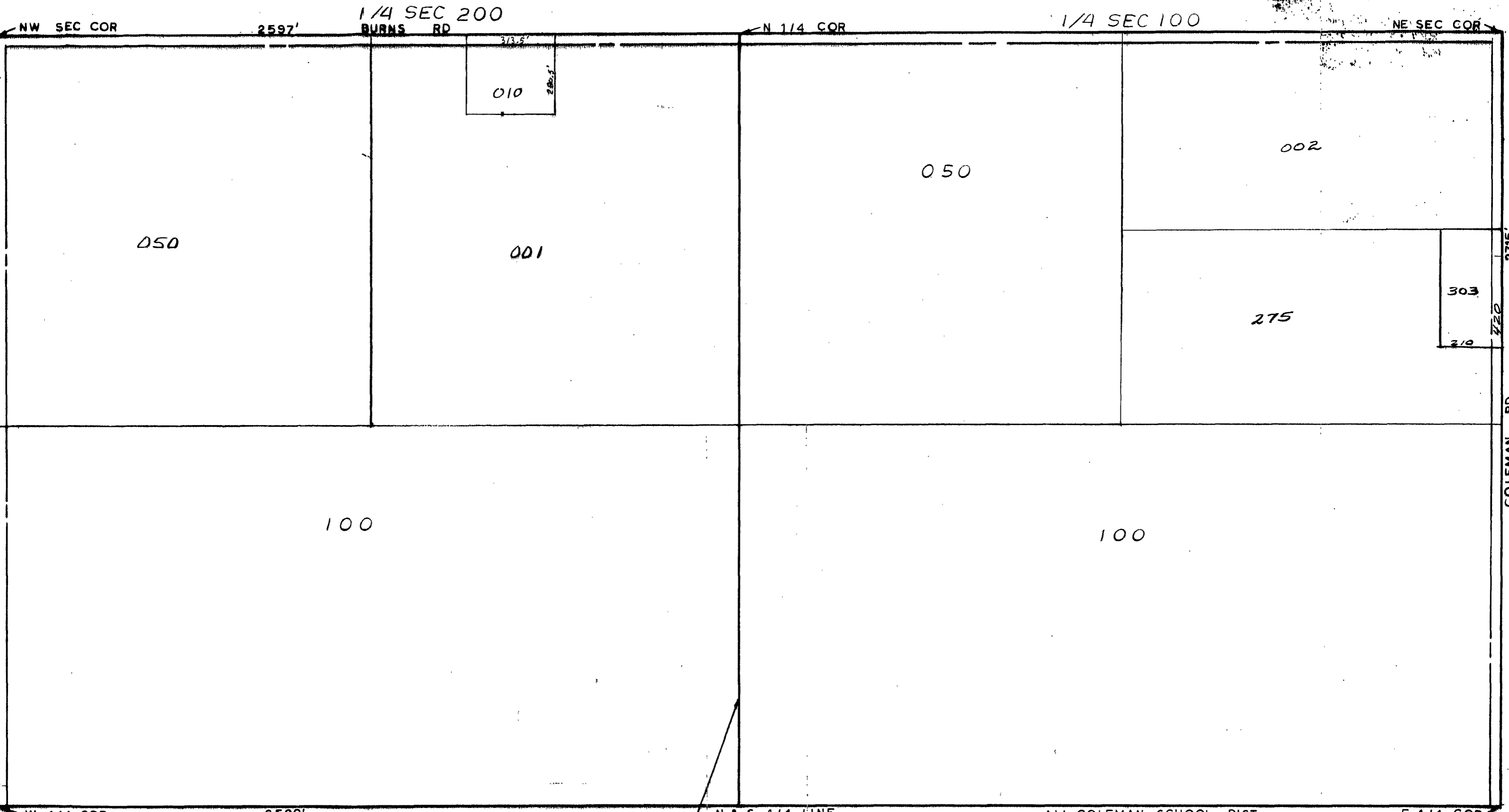


WISCONSIN COUNTY
Planning Department
121 James Savage Road
Madison, WI 53704



NW SEC COR 2597' 1/4 SEC 200 BURNS RD N 1/4 COR 1/4 SEC 100 NE SEC COR
W 1/4 COR 2590' N & S 1/4 LINE SCALE 1" = 300' DRAWN BY R.R.Y. ALL COLEMAN SCHOOL DIST E 1/4 COR

T15N R2W

GENEVA TOWNSHIP

REV. 12-5-81
N1/2 SEC 6