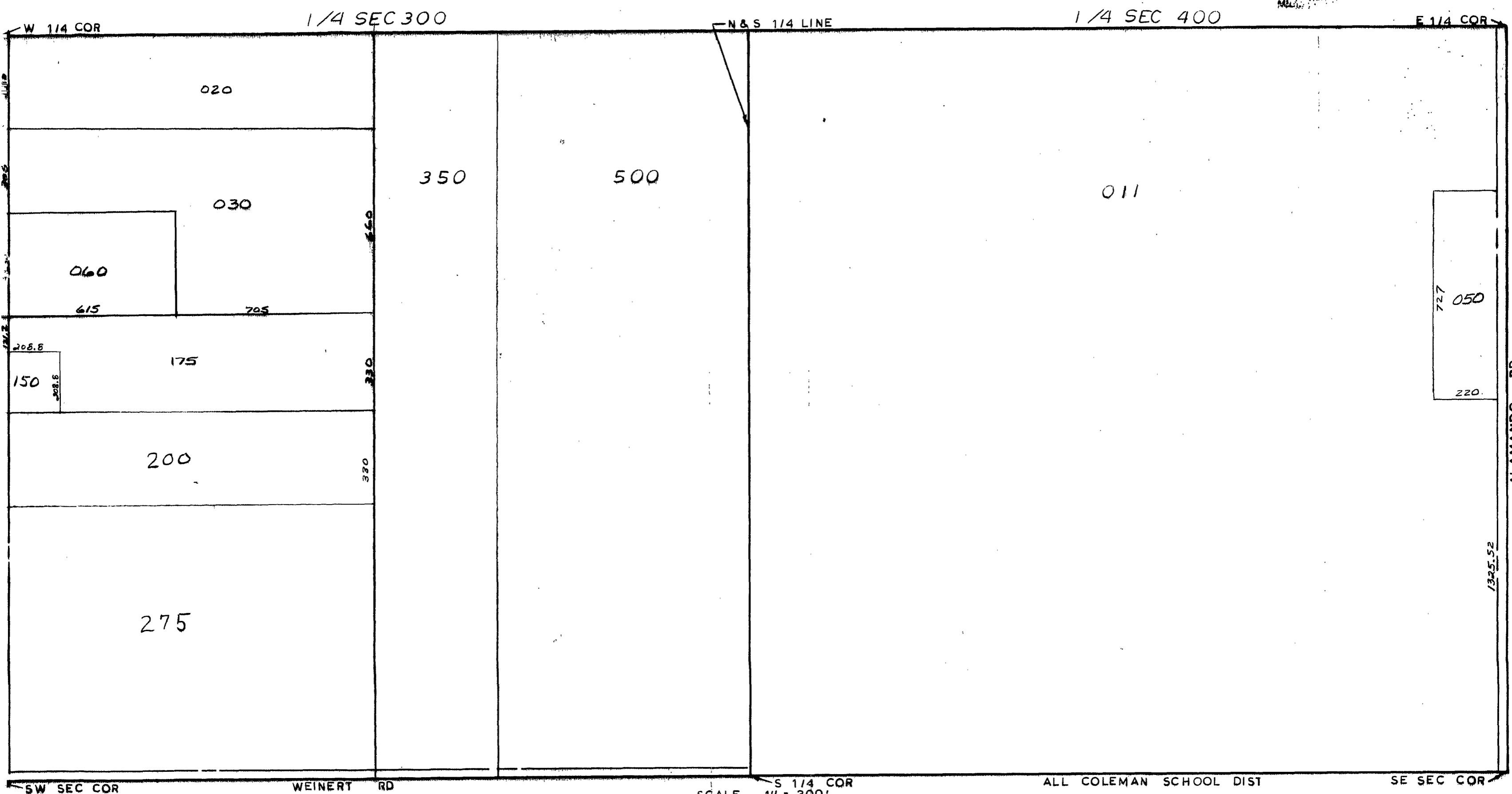


MIDLAND COUNTY  
Equalization Department  
1212 James Savage Road  
Midland, MI 48640



SW SEC COR WEINERT RD

S 1/4 COR  
SCALE 1" = 300'  
DRAWN BY R.R.Y.

ALL COLEMAN SCHOOL DIST

SE SEC COR

T 15N R 2W

GENEVA TOWNSHIP

REV. 12-17-76  
S 1/2 SEC 3