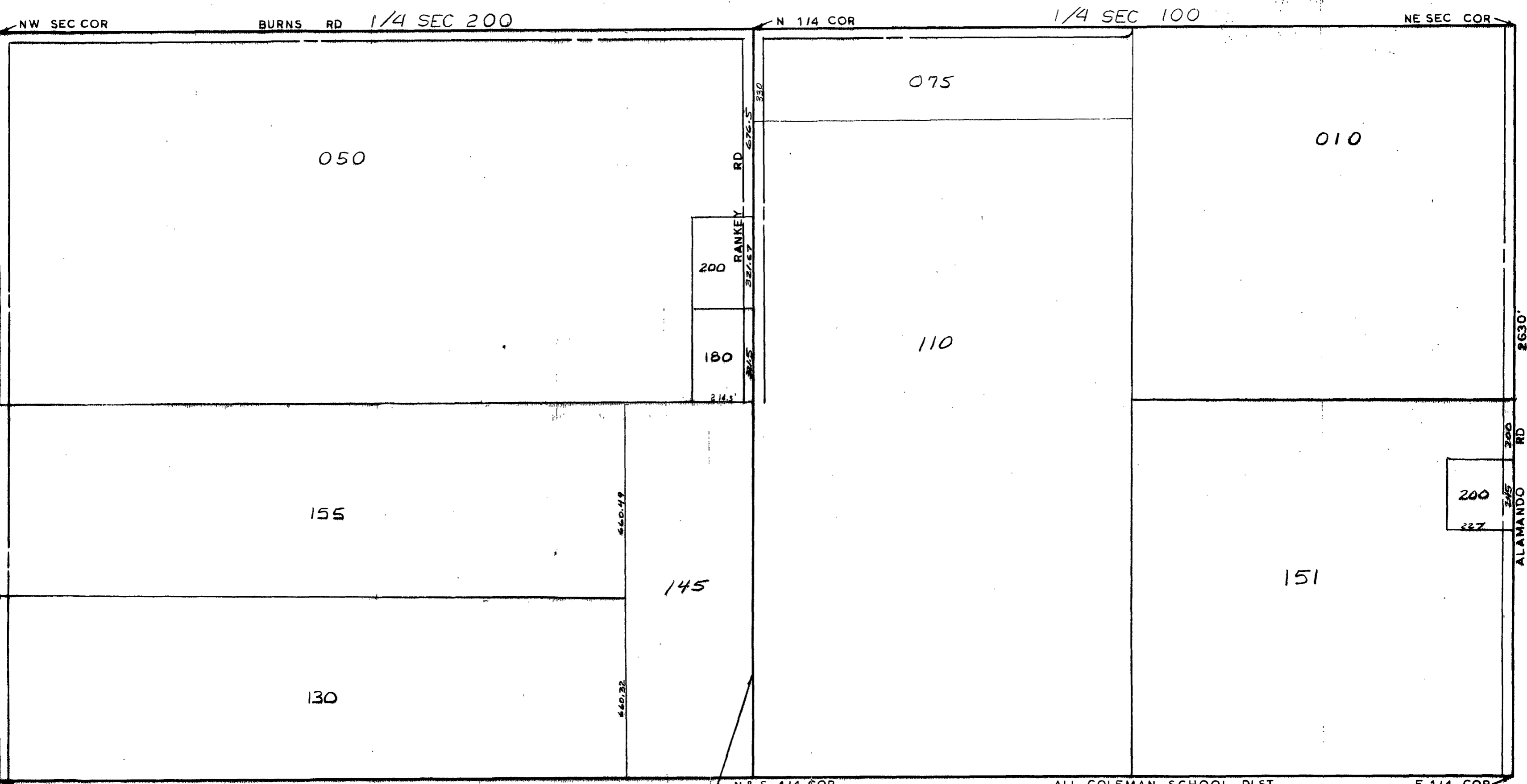


MIDLAND COUNTY  
Equalization Department  
1212 James Savage Road  
Midland, MI 48640



N & S 1/4 COR  
SCALE 1" = 300'  
DRAWN BY R.R.Y.

ALL COLEMAN SCHOOL DIST

T 15N R 2W

GENEVA TOWNSHIP

REV. 12-15-02  
N1/2SEC3