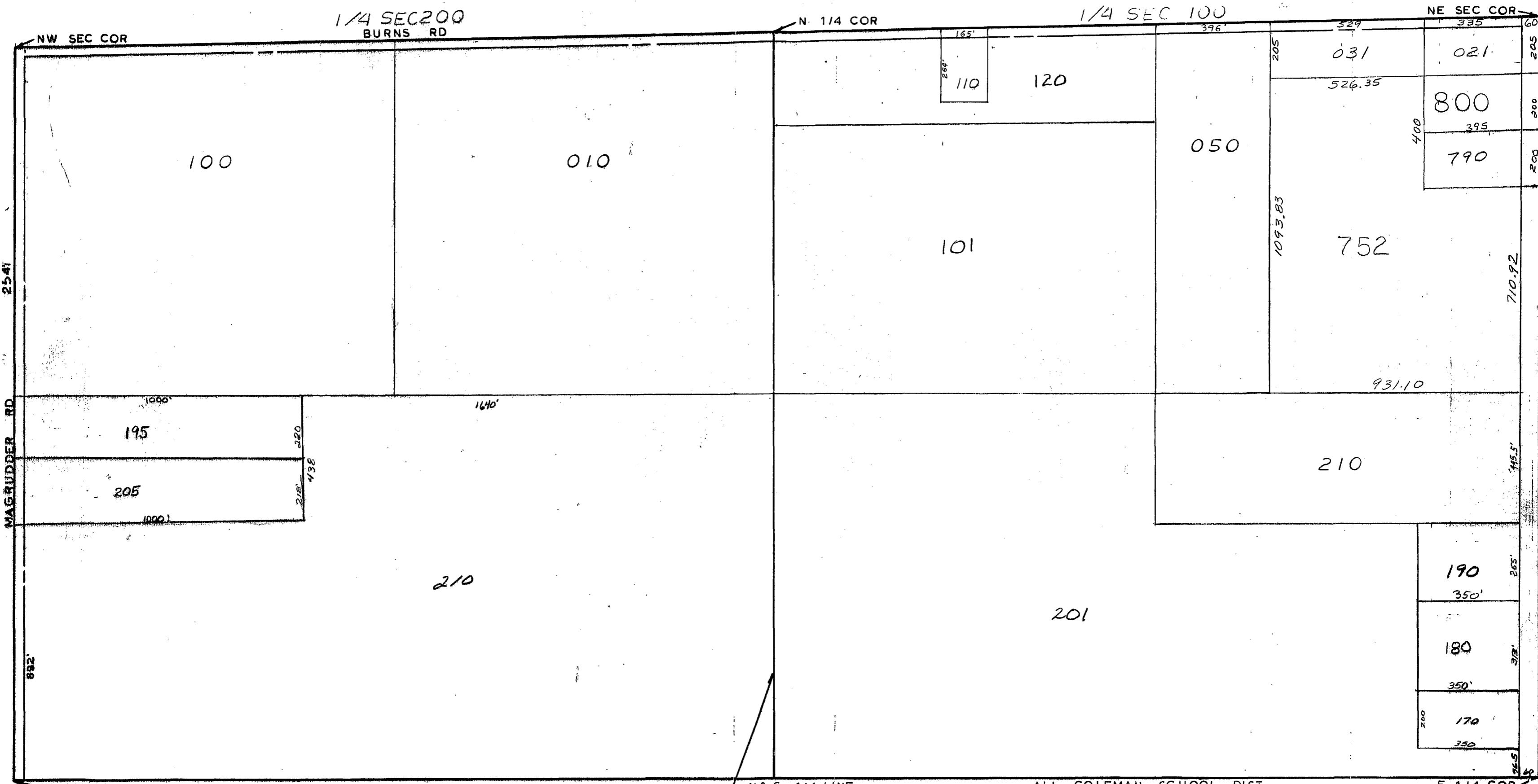


MIDLAND COUNTY
Equalization Department
1212 James Street
Midland, MI 48640



N & S 1/4 LINE
SCALE 1" = 300'
DRAWN BY R.R.Y.

ALL COLEMAN SCHOOL DIST

T 15N R 2W

GENEVA TOWNSHIP

REV. 12-11-03
N1/2SEC1