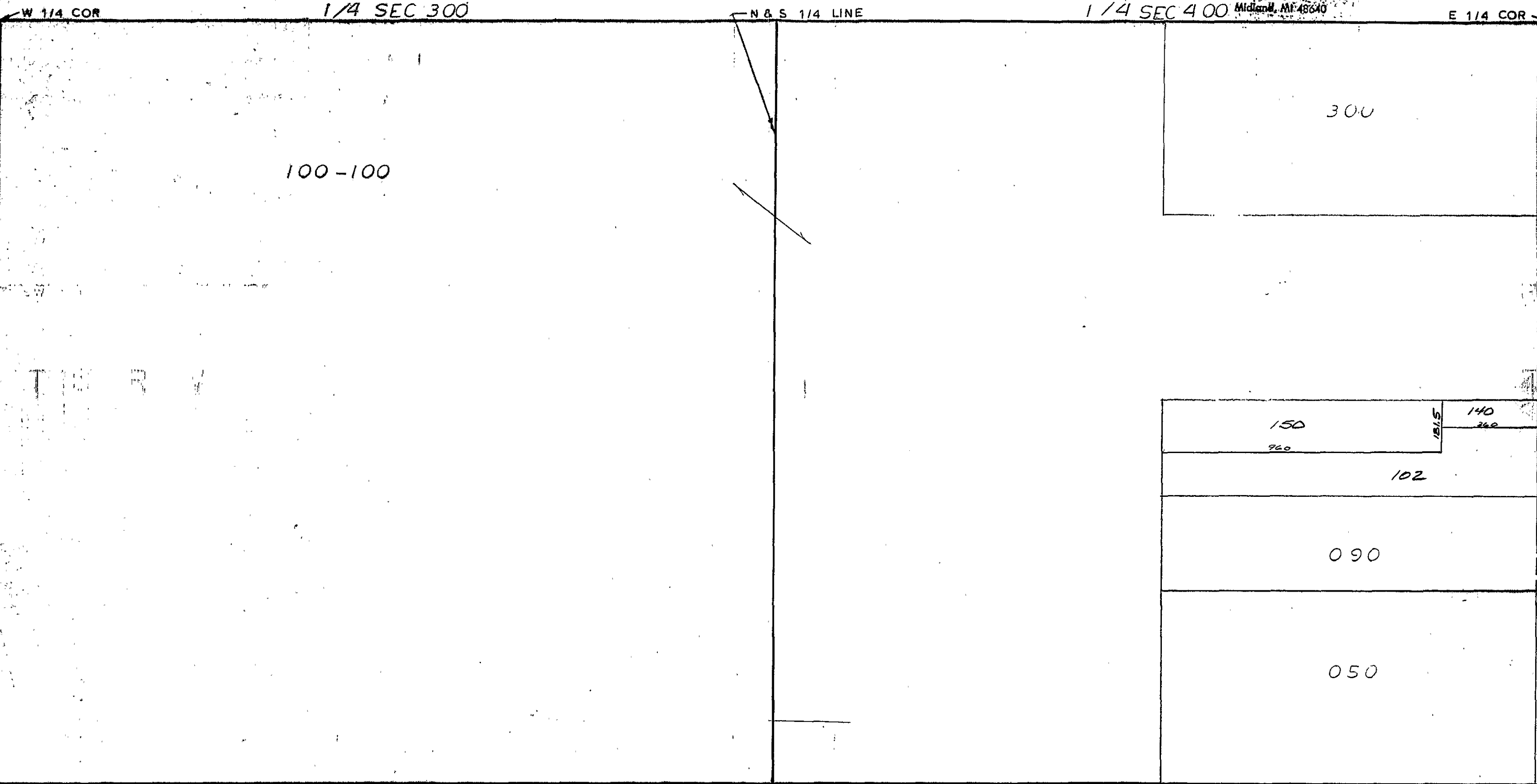


MIDLAND COUNTY
Equalization Department
1212 James Savage Road
Midland, MI 48640



1/4 SEC 300

1/4 SEC 400

N & S 1/4 LINE

100-100

300

150

960

140

360

1515

102

090

050

ALL MERIDIAN SCHOOL DIST

SCALE 1" = 300'
DRAWN BY R.R.Y.

T 16N R 1W

EDENVILLE TOWNSHIP

REV. 12-12-05
S1/2 SEC 34