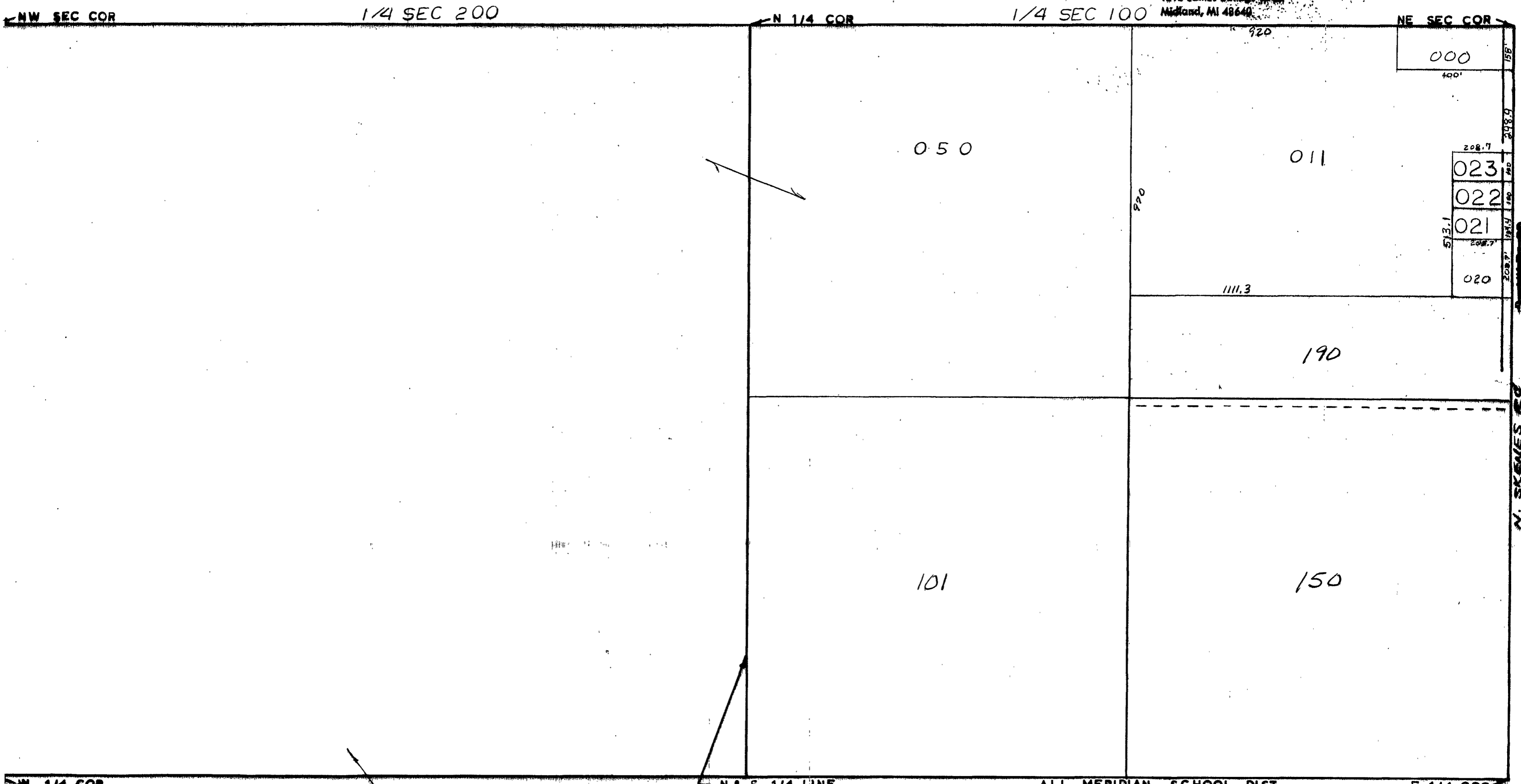


MIDLAND COUNTY  
Equalization Department  
1212 James Scoville Road  
Midland, MI 48640



N & S 1/4 LINE  
SCALE 1" = 300'  
DRAWN BY R.R.Y.

ALL MERIDIAN SCHOOL DIST

T16N R1W

EDENVILLE TOWNSHIP

REV. 12-10-97  
N1/2SEC28