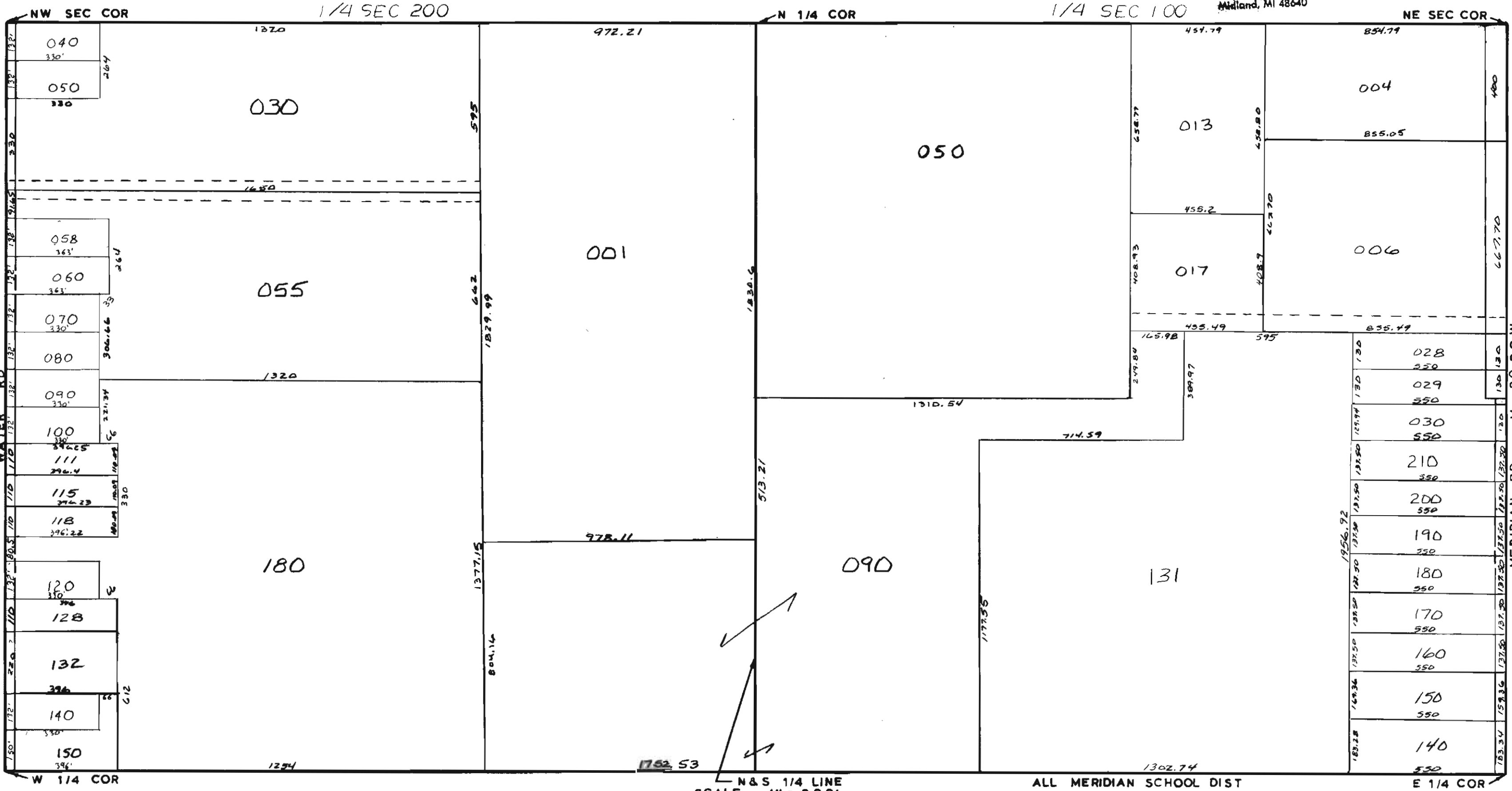


MIDLAND COUNTY
 Equalization Department
 1212 James Savage Road
 Midland, MI 48640



N & S 1/4 LINE
 SCALE 1" = 300'
 DRAWN BY R.R.Y.

ALL MERIDIAN SCHOOL DIST

T16N R1W

EDENVILLE TOWNSHIP

REV. 12-8-10
 N1/2 SEC 25