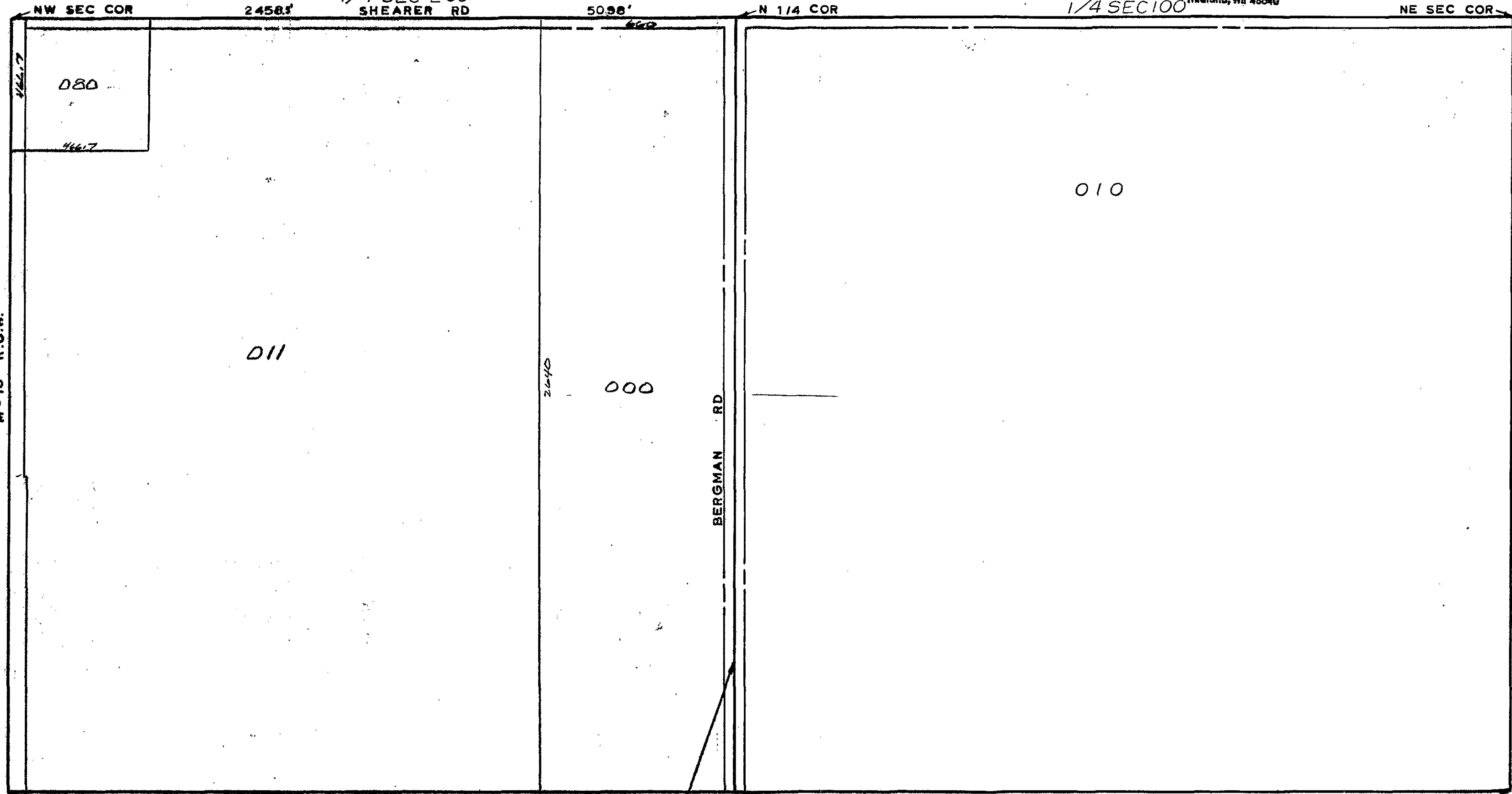


MIDLAND COUNTY  
Equalization Department  
1212 James Street  
Midland, MI 48640

1/4 SEC 200  
SHEARER RD

1/4 SEC 100



N & S 1/4 LINE  
SCALE 1" = 300'  
DRAWN BY R.R.Y.

ALL COLEMAN SCHOOL DIST

T16N R1W

EDENVILLE TOWNSHIP

REV. 12-12-05  
N1/2 SEC 18