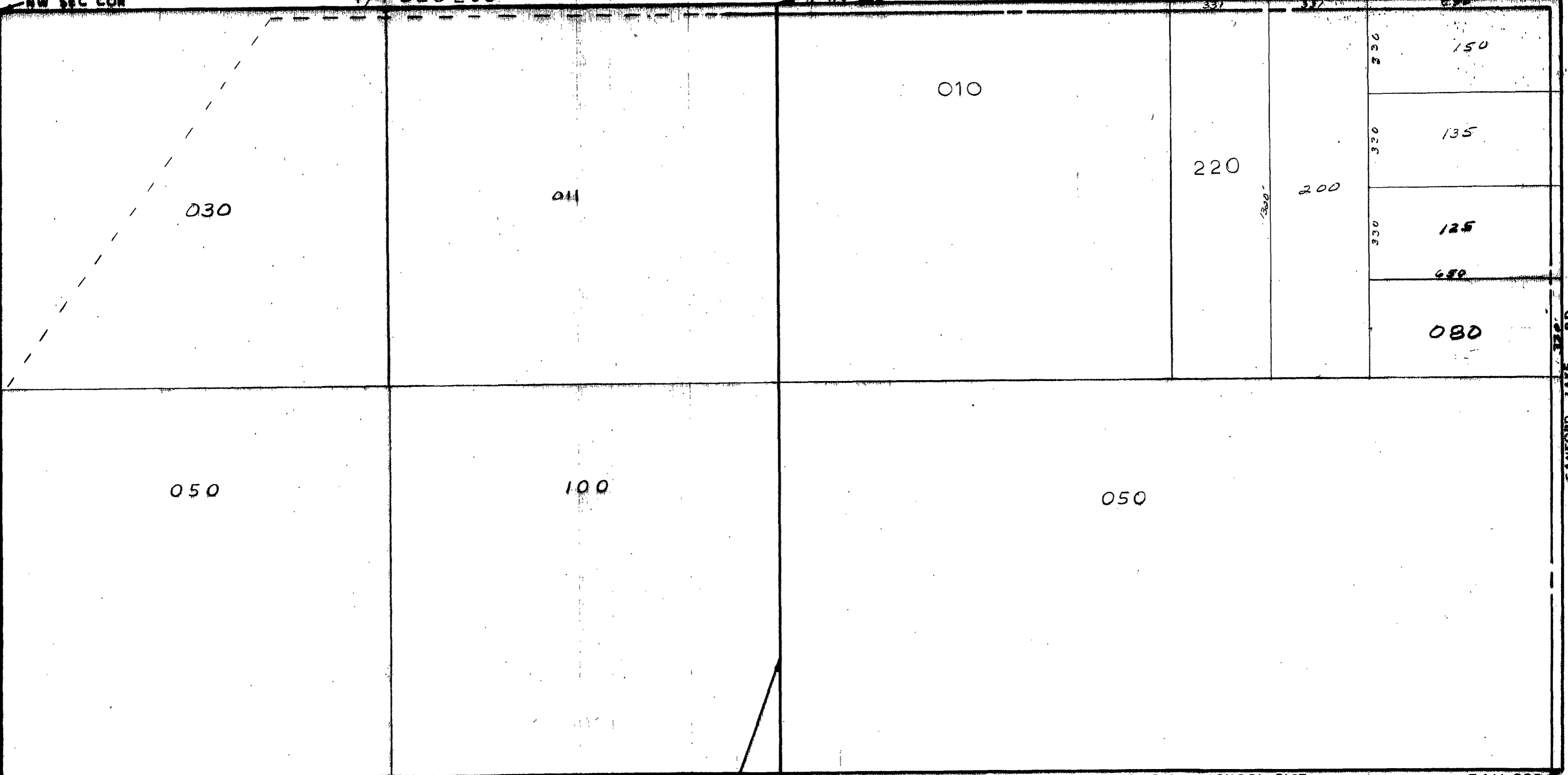


MIDLAND COUNTY
Equalization Department
1212 James Savage Road
Midland, MI 49640

1/4 SEC 100
SHEARER RD

NW SEC COR 1/4 SEC 200 N 1/4 COR NE SEC COR



N 1/4 LINE
SCALE 1" = 300'
DRAWN BY R.B.Y.

ALL MERIDIAN SCHOOL DIST

W 1/4 COR E 1/4 COR

T16N R1W

EDENVILLE TOWNSHIP

REV. 12-8-00
N1/2 SEC 15